

Santa Ana
Historical
Preservation
Society

Founded 1974

Newsletter

Summer 1999

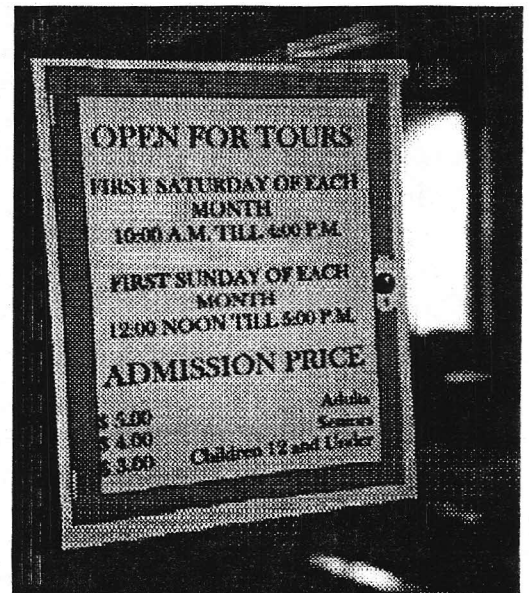
Grand Opening Will Celebrate our 25th

On Saturday, June 5, 1999, from 10:00 a.m. to 4:00 p.m. the Santa Ana Historical Preservation Society will hold a Grand Opening Celebration to commemorate our 25th anniversary year. We'll also use the occasion to announce a new monthly open house schedule at the historic Dr. Howe-Waffle House.

If you don't know the story of the house, it was built during the Victorian era, at the turn of the century. It's a Queen Anne-style house featuring two-and-a-half stories and twelve gracious rooms and was constructed for Dr. Willella Howe-Waffle, one of Orange County's first female physicians. It served her both as office and residence.

Twenty-five years ago, in a heroic effort spearheaded by Mrs. Adeline Walker, the building was saved from destruction. In the years since, it has been lovingly restored by the Santa Ana Historical Preservation Society. The doctor's office has been converted into a small medical museum that is highlighted by some of the equipment and instruments used by Dr. Howe-Waffle during the long years of her practice.

The June 5 celebration will include free tours of the house, accompanied by the harmonies of a barbershop quartet. Displays will include Victorian clothing, vintage cars and carriages, and a completely restored 1921 Seagrave fire truck. The 1901 Old Orange



President's Message

Keeping up with all of our SAHPS events is an ever-present challenge for Board members (see Calendar) and really keeps us busy throughout the year. From participating in Celebrate Santa Ana, to our 25th Anniversary Grand Opening Celebration, to the Building Bridges to Orange County History Conference, at least two thirds of our Board members are constantly working on one project or another on behalf of SAHPS!

Our Board of Directors consists of a diverse group, the majority of us holding full-time jobs in many different industries. But we are also a "working board" for SAHPS, operating without the luxury of paid assistants, benefits, or time off—it's essentially an unpaid second job.

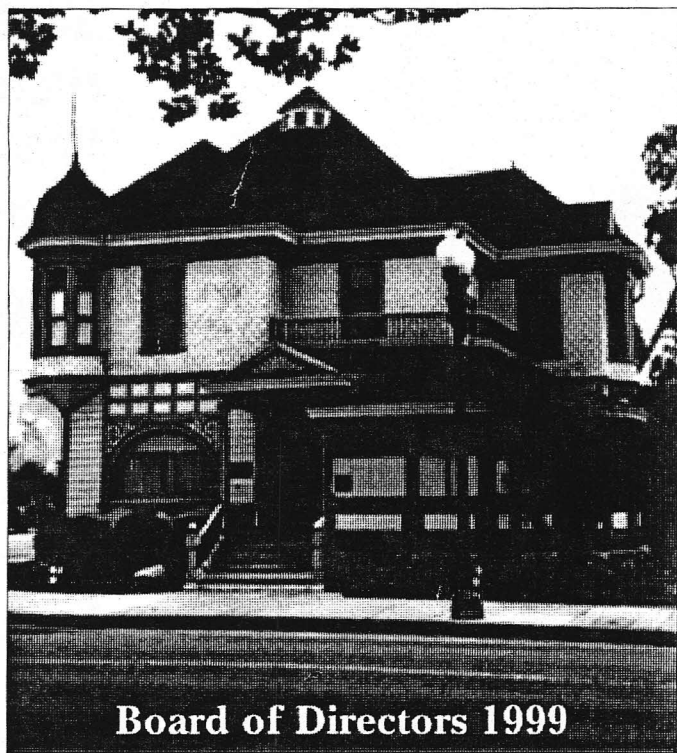
I am continuously amazed at how all these different personalities manage to work together; we do it through our shared interest in history, our recognition of the importance of what we provide for the community, and, most importantly, a sense of humor. Our rewards come from the feeling of accomplishment at a job well done and from feedback from our members, local neighborhood groups, and the community as a whole. We know we are making a difference.

It is fitting that in this, our 25th-anniversary year we have a particularly enthusiastic and imaginative Board, people dedicated to supporting historic preservation, and education, as was that original SAHPS group led by Adeline Walker. I want to thank Board members, past and present, for the hard work that has kept SAHPS alive over the years and makes us ready to face the challenges of the next century. I think Mrs. Walker would be proud.—*Alison Young*

Carriage Barn Renovation Complete

After months of work, the upper floor of the carriage barn has been refurbished, using CDBG funding. Past SAHPS President Nathan Reed did the work almost entirely on his own, including dry-wall installation, painting, installing additional electrical outlets, finishing the ceiling, adding a ceiling fan and laying a beautiful wood parquet floor.

We're also in the process of renovating display cabinets, donated by Board Member Ed Cote, so that the area can be used for history displays, project preparation, and office space.—*Alison Young*



Board of Directors 1999

President Alison Young
Vice-President Tim Rush
Secretary Jo Ann Ramirez
Treasurer Guy Ball

Directors

Johnna Adams Ed Cote Patty Haines
Toni Kimball Carol Leshner
Nan & Chris Liebsack Jim Marquez
Anthony Reichardt Jane Robertson
Eris Smith John Sorenson Wendy Zander

Curator of Collections Diann Marsh
Nathan Reed Salvage Operations
Medical Historian Dr. Lawrence Serber

The *Santa Ana Historical Preservation Society Newsletter* is produced by the Society for its members and other friends. A membership application and renewal form may be found on the back page. We invite you to join us in the appreciation and preservation of Santa Ana history.

All material in this issue is copyrighted 1999 by the Santa Ana Historical Preservation Society, 120 Civic Center Drive West, Santa Ana, California 92701.

Newsletter Editor: Beverly Thompson

Contributors: Alison Young, Nan Liebsack, & Guy Ball

Our new Website: <http://www.santaanahistory.com>

Diann, You'll Be Missed!

Diann Marsh, SAHPS Curator of Collections, longtime super-active member of SAHPS, and author of a history of our city, will be moving to the Midwest this summer. She'll be honored for all her good works on our behalf at a special event in June.

SAHPS Again Takes Part in "Celebrate Santa Ana"

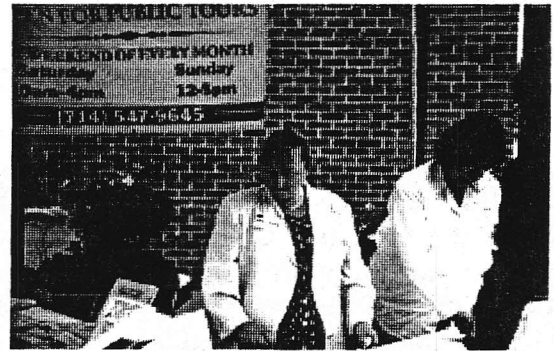
On the afternoon of May 13, the pedestrian mall of downtown Santa Ana's renovated Artists Village, located between Sycamore Street and Broadway, was the site of the third annual "Celebrate Santa Ana." Once again, the SAHPS was a participating organization, with Board members Alison Young and Jo Ann Ramirez ably manning our booth and disseminating information about our preservation activities.

The event offers an opportunity for city groups and organizations to introduce themselves to each other and to attendees.

For SAHPS, the afternoon was counted as a success: "We made ourselves a presence in the city," reports Alison. "They know we're out there."

A special attraction for the hundreds of passers-by was the "Santa Ana Survives the Great Quake of 1933" exhibit, on easels in front of our booth. The exhibit, enlarged snapshots of the damage done by the 6.3 temblor had been designed by Alison for display at the Old Orange Country Court House earlier this year.

A "networking scavenger hunt," workshops, and entertainment were on the docket for this year's event, which ended with a tour of the recently refurbished Grand Central Building and a meal in one of the downtown restaurants.



Board President Alison Young and Board Member Jo Ann Ramirez tend our booth.

Calendar

June 5—25th Anniversary Celebration and Grand Opening

First weekend of each month—Open House at the Howe-Waffle House,

Sat. 10 a.m. to 4 p.m.; Sun. noon to 5 p.m.

Summer 1999—Downtown Santa Ana Walking Tour

INTERESTED IN LENDING S.A.H.P.S. A Hand?



Participate in the Santa Ana Historical Preservation Society Membership & Gift Program.

*For you, for your family, for a friend—***Membership** in the SAHPS is for anyone with an interest in history or in helping to preserve Santa Ana and Orange County heritage. The amount of your dues can vary depending on your generosity:

YES, I would like to become a member of SAHPS or renew my current membership!

Individual \$10–\$30 *Family* \$15–\$49 *Organization/Business* \$20–\$49

Supporter \$50–\$99 *Patron* \$100 or more

*Or—*Your gift through the **Make History Live** program is also appreciated, and will help us meet the goals we set 25 years ago:

YES, I want to Make History Live through my gift of
\$25. \$50. \$100. \$ ____

Please make checks payable to SAHPS and mail to:

SAHPS, 120 Civic Center Drive West, Santa Ana, CA 92701

Include your name, telephone number, and address, complete with zip code.

Remember, membership and donations to the Santa Ana Historical Preservation Society are tax deductible!

Thank you for your support!

*A Reminder—*Businesses can support the SAHPS with tax-deductable donations to our Making History Live Program. Call (714) 547-9645 or visit our website, <http://www.santaanahistory.com>, if your business would like to help.

Continued from page one

County Courthouse, located directly across the street, will also be open for this event. Tours of the distinguished, historic sandstone building will be

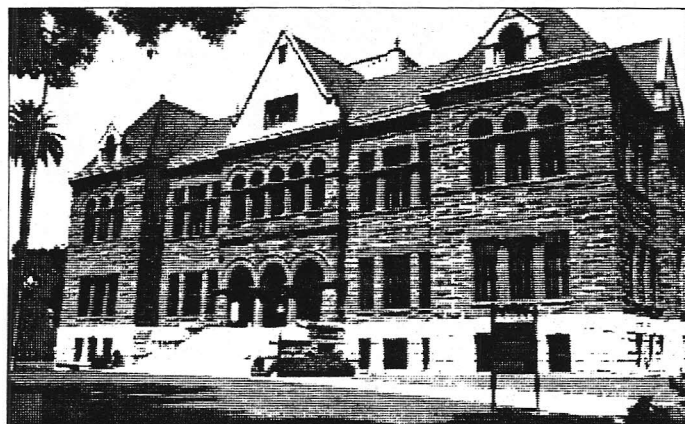


Photo of Old Orange County Courthouse by Guy Ball

available, including a visit to the special exhibits on the second floor.

The Dr. Howe-Waffle House is located at 120 Civic Center Drive West, at the corner of Sycamore, between Main Street and Broadway in downtown Santa Ana. Need more information on the Grand Opening event? Call (714) 547-9645.

—Nan Liebsack

The Truth Will Out!

Thursday, May 20 was a day for solving mysteries, thanks to a first-time program jointly sponsored by the SAHPS and the Santa Ana Public Library. For a \$10 donation participants in the two-hour "Solving the Mystery" evening workshop learned how to trace clues to information on their home, city, ancestors, or neighborhood.

With SAHPS Curator of Collections Diann Marsh and Santa Ana Librarian Ann Harder guiding the way, an even dozen of attendees learned procedures for tracing history through resources available locally, particularly in the library's Santa Ana History Room collection.

"Everyone was very enthusiastic," reports Jo Ann Ramirez, one four Board members attending, including Wendy Zander, Alison Young, and Patty Haines. Among other participants were history buffs hailing from Costa Mesa and Irvine.

At the end of the workshop everyone regrouped at the Dr. Howe-Waffle House for dessert: cheesecake served on our new china.

Interested in taking part in a future workshop on tracing the history of a house, community, or family? Call the Howe-Waffle House—(714) 547-9645—and leave a message.

SAHPS Shopping Basket



Santa Ana... An Illustrated History

Covering Santa Ana history from the mid-1800s to modern times, Diann Marsh's fine book includes many never-before-

published photographs, some from private collections.

Price: \$35.50 hardbound or \$21.50 softbound, plus \$3.00 shipping and handling.

Santa Ana Historical Preservation Society Commemorative Afghan

Cover up in a warm afghan that features woven images of the Dr. Howe-Waffle House and other historic Santa Ana buildings. Available in Williamsburg blue, navy, or hunter green, contrasted with natural. \$43.00 (members) or \$47.00 (non-members), plus \$5.00 for priority mailing.

Dr. Howe-Waffle House & Medical Museum Coffee Mug

Start your morning right, with this china mug! Makes a great gift. \$5.50



A Victorian Reclaimed

This lovely 12-page book features a beautiful black & white, hand-colored photographs of the Dr. Howe-Waffle

House, taken by Yolanda Alvarez in the days before the house was restored. Deluxe edition \$35.00, annotated \$15.00.

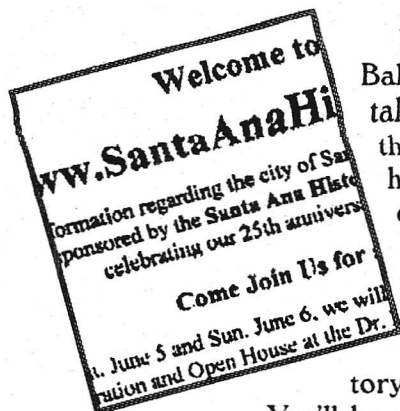
Dr. Howe-Waffle House & Medical Museum...

Framed Postcard—signed by the artist, \$8.50.

Note Cards—12 folding cards & envelopes, \$5.00.

Santa Ana Historical Preservation Society
120 Civic Center Drive West
Santa Ana, CA 92701
Prices include California sales tax.

Our Website is Ready for Your Visit!



Board Member Guy Ball is a man of many talents when it comes to the SAHPS: not only is he a fine treasurer for our organization, he has also designed our new website. Have you visited <http://www.santaanahistory.com> yet?

You'll be pleased and surprised when you click in, for Guy has arranged, among other activities, a virtual tour of the Dr. Howe-Waffle House. Descriptive text accompanies the many photographs that he has taken of the property, inside and out.

The site also offers information on Santa Ana history, SAHPS membership, exhibits, events, and our architectural salvage program.

In the next issue of this newsletter, Guy will supply a few more details on the site and how he made it work. Meantime, have a look. Don't forget to sign the guest book while you're there.

Thank You!

to Francelia Goddard, for her much-appreciated gift

to our *Making History Live* program, in honor of the late Allen Goddard.

Additional thanks are in order for the donation of 36 place settings of Haviland china by Mrs. Sabra Russell; for Evalene Pulati's gifts of six place settings of Rosenthal china, eight place settings of vintage 1937 Czechoslovakian china, dining room chairs, and \$500 to be used for the purchase of flatware for the Dr. Howe-Waffle House; for Mike Beren's very generous gift of \$500 toward the clocktower fund and \$2000 that will be used for purchasing flatware.

The lovely potted Valencia orange tree now living in the Howe-Waffle House garden was a gift of the Santa Ana Garden Club.



Get Well Soon, Roberta!

Former Board member Roberta Reed has been recovering at her home at 1205 S. Parton Street after an emergency appendectomy in mid-May.

Another way to help

Join the "Friends of Mrs. Walker"

Would you like to get more involved with the Santa Ana Historical Preservation Society? Do you have a special skill, area of expertise, or simply the time and willingness to help with Society projects throughout the year? Would you like to help but can't commit to attending regular monthly Board meetings? Then the "Friends of Mrs. Walker" is a group designed just for you!

Mrs. Adeline Walker and a dedicated group of fellow volunteers were responsible for the preservation, moving, and restoration of the Dr. Howe-Waffle House, headquarters of the Santa Ana Historical Preservation Society. The Society continues to operate today as an all-volunteer organization and relies on assistance from members of the community to plan and carry out projects throughout the year.

As a "Friend of Mrs. Walker" you will be invited to: chair or participate on committees, ranging from fund raising to property improvement to event planning; assist with a specific event by docenting, passing out flyers, baking cookies; help catalog our collections or decorate for events; assist in locating speakers or collections to display; contact businesses to support us with donations, raffle prizes, or advertising.

There is no minimum commitment—if you are not able to help on one project, we will simply contact you when we need you for another project. Whether you are able to help once a year or every month, your participation is valuable and appreciated.

If you are interested, please take a moment to complete the attached form and mail to us at SAHPS at the address below.

We look forward to getting to know you better!

Yes! I'd like to support the Santa Ana Historical Preservation Society as a "Friend of Mrs. Walker":

Name _____ Phone _____

Address _____

I am particularly interested in helping with _____

I can offer special expertise in _____

mail to Santa Ana Historical Preservation Society,

Friends of Mrs. Walker

120 Civic Center Drive West, Santa Ana, CA 92701

or call Alison Young at 714/569-9225 for more information



Santa Ana
Historical Preservation Society
120 Civic Center Drive West
Santa Ana, California 92701

Non Profit Org.
U.S. Postage
Paid
Santa Ana, CA
Permit No
1615

~~ALL INFORMATION CONTAINED
HEREIN IS UNCLASSIFIED
DATE 01-01-01 BY 000000000000~~

50 99

