



F 1 L E

# *Santa Ana* *Historical Preservation Society* *Newsletter*

NEWSLETTER EDITOR: DIANN MARSH

VOLUME 1:NUMBER 2

PRESIDENT: SCOTT MORGAN

## President's Message

Dear Members and Friends:

The Santa Ana Historical Preservation Society is delighted that so many of our members have renewed their society memberships for 1987. We thank you for your continued support of our organization.

Our 1987 Annual Membership Meeting was held at the Revere House on January 20. Those joining us enjoyed a good meal and a terrific slide show prepared by our newsletter editor, facade easement expert, and old house tour planner, Diann Marsh. Thank you, Diann, and thank you, Micki Welle, for again arranging a great Revere House Annual Meeting.

While passing out thanks, I would like to extend special thanks to Glory Allender, who spearheaded a delightful Victorian Christmas Open House at our historic Dr. Howe-Waffle House. For those of you who joined us, including our gracious Santa Ana councilmember, Pat McGuigan, and her husband, Jim, you know what a fun party it was. If you couldn't make it last year, be sure not to miss our Christmas 1897 Open House, which promises to be bigger and better.

While on the subject of celebrations, at the time of this newsletter's deadline, it appears that the City of Santa Ana, The Santa Ana Historical Preservation Society, and some good civic-minded citizens will attempt to revive the Let's Improve Santa Ana luncheon. A tentative date of April 29 has been set, so mark your calendars and watch your mailboxes.

Could there be more celebrations in the works? Also in the planning stages is an Old-fashioned Ice Cream Social in the Howe-Waffle House gazebo, for our members and

(continued on next page)

## Awards

Honorees given plaques at our Annual Dinner included Mr. and Mrs. Joe Robinson and the Heninger Park Historic District Neighborhood Council. The Robinsons were the recipients of our first Historic Preservation Award for their rehabilitation of the McAndrews Cottage on Civic Center Drive. The plaque for the Heninger Park organization was accepted by chairpersons Susan and Don Tully. Several person from Santa Ana's newest historic district were in attendance.



Pictured above is one of the most important landmarks in the Heninger Park Historic District. Built in 1914 as the Richland Avenue Methodist Church, the Craftsman-style building retains most of its original architectural character.

(More about Heninger Park on page 3)

## President's Message continued

supporters, sometime this summer. Our long-time member, Vice-President, and Past President, and all-around great guy, Royal Spurrier, came up with that superb idea. If you also think its a good idea, let Royal or me know, and we'll pick a date.

Could there be even more S. A. H. P. S. activities in the planning stages? Indeed there are! Diann Marsh is leading the efforts to secure a Historic Tour in Santa Ana on April 30th and May 1st of 1988. This will be an offically-sanctioned event of the Orange County Historical Society Centennial Committee and will be also co-sponsored by the French Park Neighborhood Association. Both the county and the Howe-Waffle House will be 100 years old in 1989. Santa Ana High School will also celebrate its centennial in 1989, as well as one of our best-known city businesses, First American Title Company. It is greatly rewarding to our society that these living components of Santa Ana's and Orange County's history are doing so well as they enter their second century.

Again, thanks to our members who have renewed their memberships in 1987. Your support during these exciting times for the Santa Ana Historical Preservation Society is very much appreciated.

Sincerely,  
*Scott*  
Scott Morgan

## NEWSLETTER

Our newsletter is printed four times a year: fall, spring, summer and winter. If you have any articles, announcements, or events you would like to share with us, we will be very pleased to include them in our publication. Call Diann Marsh at 541-2441 or mail your article to : The Santa Ana Historical Preservation Society, 120 W. Civic Center Drive, Santa Ana, CA 92701. Our telephone number at the Howe-Waffle House is 547-9645. We are looking forward to hearing from you!

## PAINTING

Mr. and Mrs. Frank Verda of Santa Ana have recently presented a large, beautifully painted portrait of Winston Churchill to our Society. Mr. Verda, a fine artist for over 50 years, once owned an art gallery in Anaheim. He painted the Churchill portrait in 1954. The Society wishes to thank the Verdases for their important gift. It will be hung in the Howe-Waffle House.

## SANTA ANA HISTORIC TOUR

Exciting plans are under way for the Santa Ana Historic Homes and Building Tour to be held April 30 and May 1, 1988. The Howe-Waffle House will be the center of the tour, with other historic buildings within walking distance and some French Park historic houses open for viewing.

## MYSTERY PHOTO

Does anyone know the location and history of the building shown on the left? A prize will be offered to the first person to call Diann Marsh at 541-2441 and identify the location and original use of the building. Note the crenellated tower on the right side. The building is now painted light grey, accented with maroon. A manufacturing business occupies the interior.



## Heninger Park



Two fine examples of Craftsman architecture, the Dale House (518 S. Birch) and the Crasher House (at 516) are indicative of the strong Craftsman character of the neighborhood. The Dales were prominent merchants in town, as were many who settled the Heninger Park area. The houses are both being beautifully restored.

One of four Prairie School houses in the Historic District, the Wilson House, at 530 S. Birch, is an especially fine example. Note the large pillars on each side of the front door, the horizontal lines produced by the cornice and belt-course, and the multi-paned casement windows. The Wilsons, James and his wife, Clara, were prominent local ranchers who built the house in 1912



This was the dream house of Martin and Mary Heninger, and was built at 602 S. Birch in 1911-1912. Mr. Heninger, along with his brother, H. B., was the developer of most of the Historic District. This house did much to set the style and character of the neighborhood. It is in the process of being returned to its original fine condition.



# Wilshire Square

Congratulations to the residents of Santa Ana's newest organized neighborhood, Wilshire Square. The boundary streets are: McFadden on the north, Edinger on the south, Sycamore on the east, and Flower on the west. The group selected the name Wilshire Square because that was the name of the development which represented the most significant settlement period in their neighborhood. English Tudor, French Norman and Spanish Colonial styles predominate, and most of the homes were built in the 1920's. A quiet neighborhood with wide streets, mature trees, old-fashioned lamp posts, and neatly maintained homes, Wilshire Square is one of Santa Ana's nicest family neighborhoods. Chuck Stevens, of 1102 S. Ross St. is the newly-elected president. Darl Incledon, of the City Housing Services, has been working with the neighborhood.

## French Park

A precise plan for the future of the Historic French Park neighborhood has been almost completed by the organization's Executive Board. Each street and building was analyzed for present condition, future use, degree of rehabilitation needed, and current problems represented. The plan will be submitted to City Manager Dave Ream in the near future.

The Ball House (1109 N. Bush) has been completely stripped of its paint, had new roof sheeting installed, and the

foundation repaired. We are looking forward to the day when it is fully rehabilitated and in use as a professional office building.

The Harmon-McNeil House is on its foundation and will be painted soon. The City Staff will soon be sending out requests for proposals to rehabilitate the house. The neighborhood is flexible as to the use of the house, and it could become a duplex, a bed-and-breakfast, or a single family home.

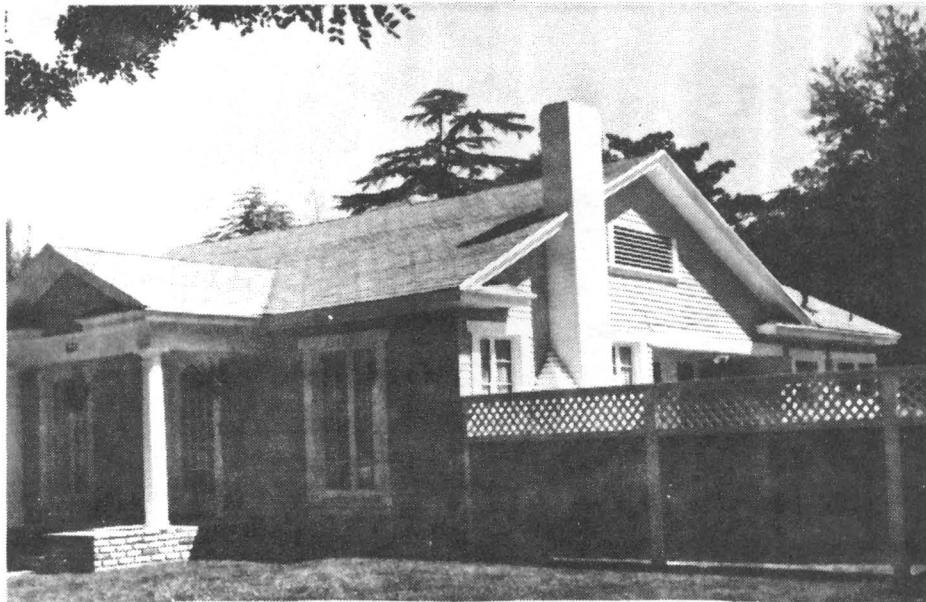
The Whitson House has been moved to its new home on the corner of Eighth and Spurgeon and is being purchased by Mike and Marlene Brajdec. Marlene and Mike are especially fond of Craftsman architecture, and have some exciting plans for the restoration of this fine Craftsman Bungalow.

The French Park Place office building, at Tenth and Spurgeon has most of the basement structural work completed and is making progress every day.

Dale and Cory Prochnow have taken the last of the stucco off of their home on the corner of Civic Center Drive and French Streets. Most of the clapboard siding has been repaired or replaced and the house primed in preparation for the final paint job. The project was a tough one, but the successful results appear to be well worth the substantial time and effort.

## Old House Journals

Royal Spurrier, our first Vice-President, would like to encourage all of you to take advantage of our Society's ten years worth of Old House Journals. They are in the library at the Howe-Waffle House, and all



621 S. Parton: Heninger Park has the highest concentration of this style of 1920's Colonial Revival Bungalow in the City. It was built by Archie and Leora Snodgrass in 1921. He worked for the Edison Company.

you have to do to take advantage of the vast restoration knowledge the Journals possess, is to call Royal at 547-9645 and leave a message. Royal will get back to you and arrange an appointment.

## Loans

The City of Santa Ana Housing Services has historic preservation loans and other low interest loans available to those who are planning to restore a historic home. The historic preservation loans are presently at 8% and have not maximum income limit. Each loan can be granted for an amount up to \$50,000. Other loan programs are available to suit the needs of both owner-occupied homes and rentals. Please call Mike Linares at 647-5874.

## S.A.N.E.

The neighborhoods of Santa Ana have united together to start an organization called S.A.N.E., which is dedicated to the betterment of the city. A well-attended and inspiring Saturday morning workshop accomplished the verbalizing of Santa Ana's problems and the setting of problem-solving priorities. A task force was formed to draft by-laws of the new organization and the whole group will meet again on May 2nd. Kathy Rosenow and Sara Broadbent have been the prime movers toward the formation of this much-needed new organization of Santa Ana neighbors. We wish this group much success in the future.

## History Celebration

The Santa Ana History Room of the Santa Ana Public Library is celebrating its tenth anniversary this year. Dedicated in January of 1977, the Santa Ana History Room was

the result of an idea proposed by the City of Santa Ana's Cultural Heritage Committee, a group of citizens interested in preserving local history. The Room's holdings are historical materials related to Orange County and its communities as well as Santa Ana.

The members and friends of the Santa Ana Historical Preservation Society are invited to take part in this celebration. Open house will be held each evening during the first week in May (Monday, May 4th through Thursday, May 7th) from 6:30 p.m. to 8:30 p.m. The collections will be on view and videotapes "shot in Orange County" will be screened. Light refreshments will be served.

If the afternoon is a more convenient time for some of your members, the Room will be open also the first week of May during its regular hours on Tuesday, Thursday, and Saturday from 2 p.m. to 6 p.m.

Please be sure to introduce yourself to the History Room staff and feel free to ask questions.

The Santa Ana Public Library is located at the corner of Civic Center Drive and Ross Streets; the entrance to the parking lot is behind the building on Ross. The History Room is on the east side of the building, second floor, through the newspaper room.

We look forward to meeting you and acquainting you with our resources. If there is a need for more information, please call Anne Harder at 647-5280 during our regular hours on Tuesday, Thursday, and Saturday.

Anne Harder

## Keep America Beautiful

Santa Ana's Keep America Beautiful Committee, under the chairmanship of Susan Tully, recently received a proclamation from the city council naming April 26 to May 2 as Keep America Beautiful Week. Susan and her committee are planning several activities.

The Santa Ana Historical Preservation Society would like to invite you to join us. We welcome anyone who has an interest in old houses and buildings, as well as local history, to join our organization. Our members are our most valuable asset.

NAME \_\_\_\_\_ TEL. NO. \_\_\_\_\_  
ADDRESS \_\_\_\_\_ CITY \_\_\_\_\_ ZIP \_\_\_\_\_

\$5 Individual Member

\$7.50 Family

\$10 Organization/Business

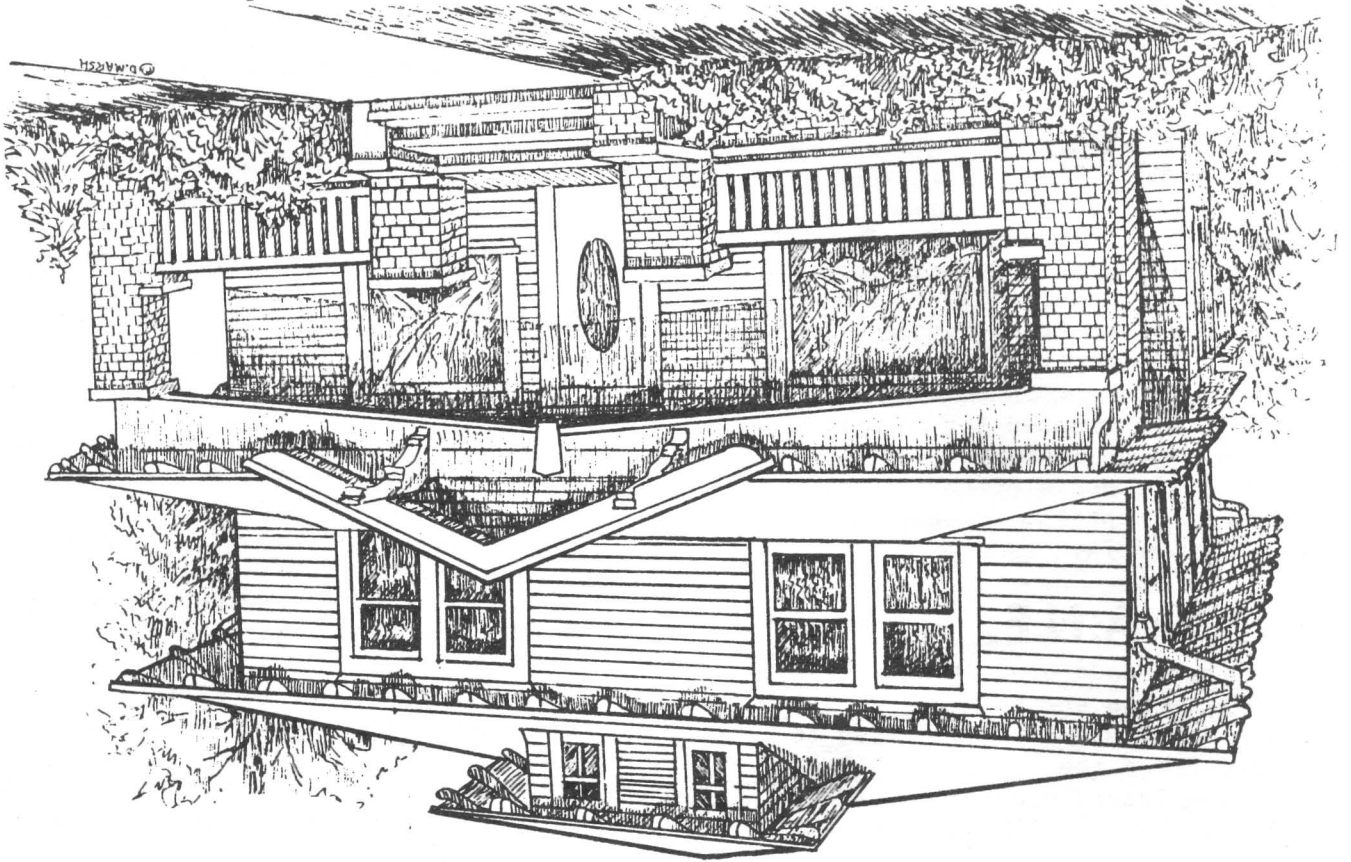
\$25 Supporting Member

\$100 Patron

All membership donations are tax deductible

Please send to: The Santa Ana Historic Preservation Society  
120 West Civic Center Drive  
Santa Ana, California 92701

# Crane House - Historic Heninger Park



Santa Ana Historical Preservation Society  
120 West Civic Center Drive  
Santa Ana, CA 92701

