

Santa Ana Historical Preservation Society Newsletter

President: Scott Morgan •

• Editor: Diann Marsh

ANNUAL CELEBRATION DINNER WEDNESDAY, FEBRUARY 1st

6:30 p.m.

REVERE HOUSE

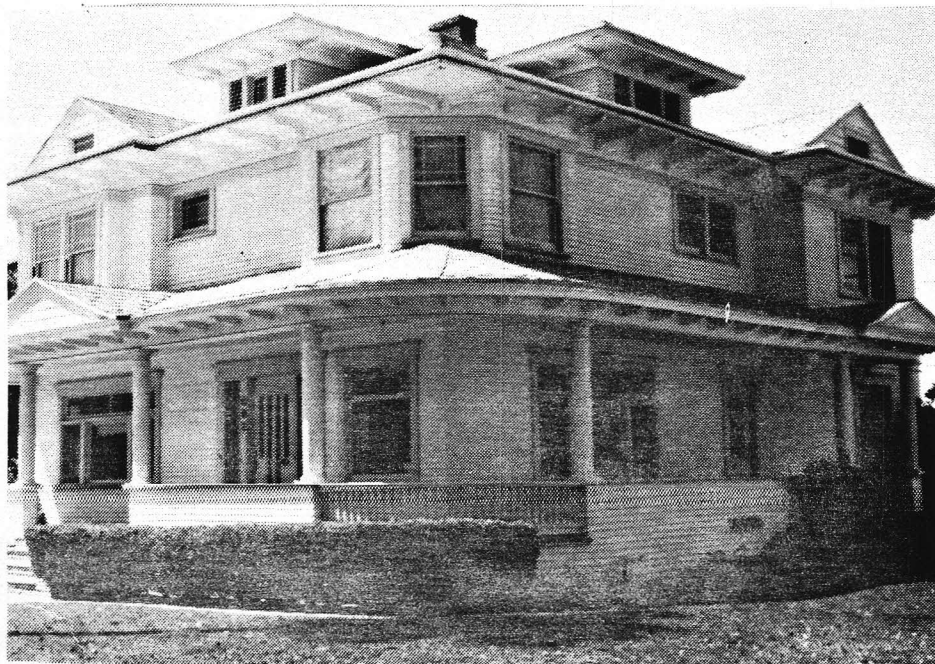
(First Street at Tustin Avenue)

12:50 per person

R.S.V.P. 547-9645

DR. WAFFLE HOUSE NOW OPEN ON TUESDAYS

The Dr. Waffle House will be open on Tuesdays from 10 a.m. to 1:30 p.m. for tours. We hope to coordinate our efforts with those of the Old Courthouse Museum Society so that people will be able to tour both facilities. We will continue to be open on the third Saturday of each month. We are in need of docents to staff the house on Tuesdays and Saturdays. For further information call 547-9645 and we will return your call.



WINTER 1989
HISTORIC PRESERVA-
TION AWARD

MARTIN HENINGER/
SANDS HOUSE

602 S. Birch
(story inside)

PRESIDENT'S MESSAGE

Happy New Year! As we enter Orange County's centennial year of 1989, the Santa Ana Historical Preservation Society is pleased to plan our Spring walking tour as an officially sanctioned Orange County Centennial event. Our first program of the new year, however, will be our annual all-member dinner meeting at the Revere House in Tustin on February 1st at 6:30 p.m. We are planning another outstanding program for our annual meeting, and we will also be pleased to present awards to the owners of three outstanding preservation projects in Santa Ana, which we selected during the past year.

Our organization enjoyed a successful 1988, and we were delighted to welcome a good number of new members to our ranks. Last year, the Waffle House played host to a number of important historical and community receptions and functions, and we hope to continue to extend our hospitality to the community throughout the new year as our beloved Victorian celebrates its own centennial, having been built in 1889.

Again, the Board of Directors extends its very best new year's wishes to you and your for a happy, prosperous, safe, and healthy 1989.

Scott Morgan

MARTIN HENINGER HOUSE

David and Nicki Sands are the recipients of our Winter 1989 Historic Preservation award. They are the owners of the Martin Heninger House, located at 602 South Birch Street. The house, which was occupied by a rehabilitation group for several years before the Sands family purchased it, now sports a new paint job,

improved landscaping, and a fresh appearance. The Sands are making progress on the restoration of the interior. The house is located in the center of the Heninger Park Historic District, officially designated by the Santa Ana City Council in 1986.

Martin Heninger, one of Santa Ana's most prominent early developers, was responsible for the subdividing and marketing of many of the lots between Camille and McFadden and Sycamore and Flower Streets. Mr. Heninger sold individual lots and often built a custom home for the new owner. He and his wife, Mary, built their first home on Broadway soon after the turn of the century. In 1911 they began construction on this large new residence. It as their dream home and they incorporated their every wish into its fine design. Airy rooms, with lots of large windows, was the result. The house is basically Colonial Revival, the style most favored by the Heningers and used frequently throughout Heninger Park. A deep enclosed cornice, decorated with a row of closely-set brackets, dominates the second story roof line. The roof design is repeated on the dormers and the distinctive wrap-around front porch. Round classical columns add to the Colonial Revival styling. The front door is of the Craftsman design and is of high quality. The window design features narrow glass mullions and square corner mullions on all of the upper sections of the double-hung windows. The house is typical of the many fine Colonial Revival homes still surviving in Santa Ana, and we are pleased to honor the Sands family for their successful restoration efforts.

DR. WAFFLE CARRIAGE ROBE

Mrs. Betty Tanner, who is a step-graundughter to Dr. Waffle, has given our organization a lovely dark green velvet carriage robe originally owned by the Doctor. The robe is very heavy and was used by Dr. Waffle as she drove her

buggy through the country side to make house calls to her many patients. In her 42nd year as a doctor, she was interviewed by the Santa Ana Register and commented on those early days:

"I can recall the days when a doctor, in order to drive to Los Angeles from Westminster, had to break his own road through the cactus, the willows and the mustard. There were no roads...and the winter rains brought floods that were too awful to recall. Many is the day I have driven my horses through mud and water up to their waists with the flood creeping in at the bottom of the buggy. Once, during a bad epidemic of la grippe, I drove 1,000 miles in all, visiting my scores of patients."

We will treasure the carriage robe and would like to thank Mrs. Tanner for her donation.

VICTORIAN CHRISTMAS

The third annual Victorian Christmas Party, given by our organization on December 8th was a smashing success. We especially want to thank all of you who provided the food. Last year we hired a caterer at a cost of \$500.00. This year we were able to depend on our

members. The food was very good and we were able to cut those expenses by 90 %. The Dr. Waffle House is always looks so beautiful decorated for Christmas and the added touch of the string quartet was perfect for a Victorian House.

We were honored to have among our guests Mrs. Ethel Moore of Los Angeles. She is the great-granddaughter of Dr. Waffle and is the person who donated the commode and dresser in the Westeria Room, as well as the revolving bookcase in the Second Parlour. She wore a lovely black antique lace dress with a matching parasol and black and tan lace shawl. Her granddaughter, Jan Lindstrom, brought her to the party. We are always delighted to have members of the Howe and Waffle families in attendance at our events. It adds a "sense of history."

1989 HOUSE TOUR

Please mark Saturday, April 29th and Sunday, April 30th on your calendar. Those are the dates of this year's house tour. Once again we will be working with the Historic French Park Association to sponsor this event. Last year's tour drew 1329 people and, with the addition of an antique/restoration show, we hope to draw an even bigger crowd this year.

The Santa Ana Historical Preservation Society would like to invite you to join us. We welcome anyone who has an interest in Santa Ana or Orange County history. Our members are our most valuable asset.

NAME _____ TEL. NO. _____

ADDRESS _____ CITY _____ ZIP _____

Individual: 10.00
Organization: 20.00

Family: 15.00
Supporting: 50.00

Please send to : The Santa Ana Historical Preservation Society
120 Civic Center Drive West
Santa Ana, CA 92701

THIRD ANNUAL HISTORIC PRESERVATION AWARDS

This is the third year that the Santa Ana Historical Preservation Society has honored individuals and organizations for their contributions to historic preservation in Santa Ana. In 1987 Mr. and Mrs. Joe Robinson received a plaque for their restoration of the McAndrews Cottage on Civic Center Drive. That same year we honored the Heninger Park Neighborhood Council, presenting an award to Susan Tully, then president of the organization. Last year we were pleased to award a plaque to Mr. and Mrs. Fred McNeal for the restoration and adaptive reuse of the Ross-McNeal House, which has been in Fred's family since it was built in 1879. The owners of the Dr. Ball House, Leon Roach and Gary Hadsell, were honored for their rehabilitation of that residence as a professional office. The owners of the newly-restored Colonial Revival home at 702 S. Orange were also honored. This year we will be presenting plaques to:



THE MARTIN HENINGER/SANDS HOUSE
(article on preceding page)

THE ROBINSON/SODIKOFF HOUSE

The newly-rehabilitated Robinson/Sodikoff House (opposite) is located at 219 E. Washington St. in the Historic French Park District. It is now the office of Mr. Sodikoff, an attorney and has a fresh new cream exterior with soft green trim. The house was built by Phandra Robinson in 1911.

THE IGLESIA DE JESUCRISTO

Built in 1928 as the Orange Avenue Christian Church, the church building and the houses to the north and east have all received impressive facelifts by the present congregation. The church was originally a branch of the First Christian Church, whose members saw the need to serve the growing south end of Santa Ana. The Reverend R. T. Vance was the first pastor.



ALL MEMBERS AND THEIR GUESTS
ARE CORDIALLY INVITED TO ATTEND THE
ANNUAL MEETING
OF THE
SANTA ANA HISTORICAL PRESERVATION SOCIETY

AT 6:30 P.M.

ON

WEDNESDAY FEBRUARY 1, 1989.

WE WILL MEET FOR DINNER

AT THE

REVERE HOUSE,

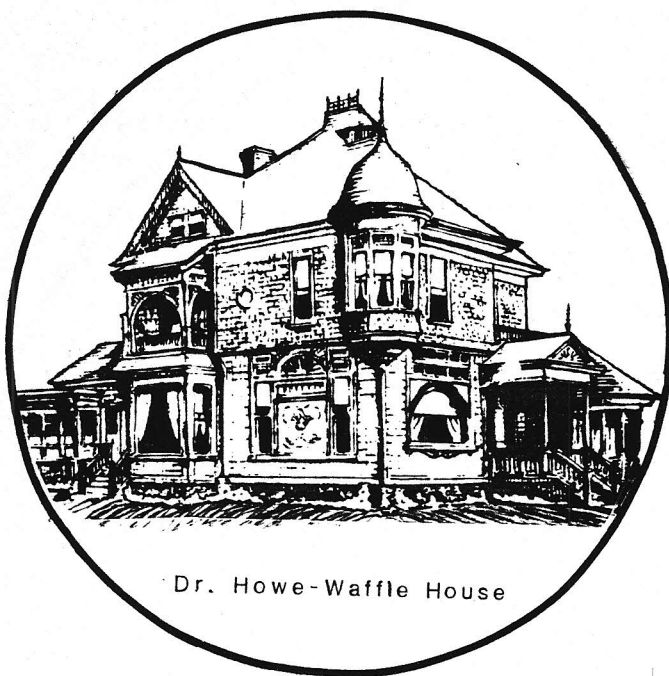
FIRST STREET @ TUSTIN AVENUE.

THE COST, PAYABLE AT THE DOOR, IS A MERE

\$12.50 PER PERSON.

PLEASE RSVP BY MONDAY JANUARY 30
TO OUR TELEPHONE ANSWERING MACHINE,

PHONE 547-9645.



Dr. Howe-Waffle House

1989 SANTA ANA VICTORIAN HOME TOUR, ANTIQUE AND RESTORATION SHOW

SATURDAY AND SUNDAY
APRIL 29th and 30th

11:00 a.m to 5:00 p.m.

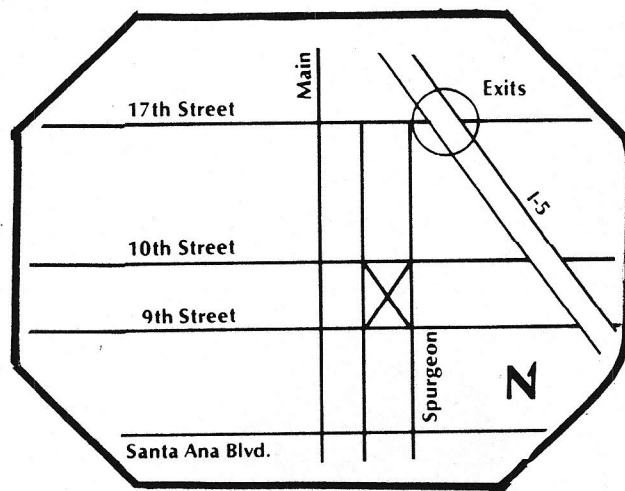
A DONATION OF \$8 PER ADULT
AND \$1 PER CHILD INCLUDES
REFRESHMENTS AND A TOUR
BOOKLET

Tickets may be obtained in two ways:

In advance by mail at the Santa Ana Historical
Preservation Society, 120 Civic Center Drive
West, Santa Ana, CA 92701

At the site of the Antique and Restoration
Show in the parking lot between Bush and
Spurgeon, 9th and 10th, in the Historic French
Park District

For further information, call 714/541-2441



SPONSORED BY THE SANTA ANA HISTORICAL PRESERVATION SOCIETY AND
THE HISTORIC FRENCH PARK ASSOCIATION

I would like ___ tickets for the Santa Ana Victorian Home Tour/Antique and
Restoration Show and am enclosing a \$_____ donation.

Name _____ Tel. No. _____

Address _____ City _____ ZIP _____



Howe-Waffie House
120 W. Civic Center Dr.
Santa Ana