

Newsletter

Winter 1999

We Start the Holidays With a Victorian Tea

However you looked at it—as an excuse to use our lovely new white china, as a way to show off how beautiful the Dr. Howe-Waffle House looks these days, or as a launch event for the Holiday Season—the Turn-of-the-Century Holiday Tea held on Saturday, December 4 (complete with the presence of Dr. Willela Howe-Waffle herself in the person of Nan Leibsack) made for a great day.

More than 50 guests took afternoon tea in a setting made all the more charming by the addition of Victorian-style holiday decorations. Sandwiches, cookies, and pots and pots of Earl Grey tea were the order of the day, prepared in the kitchen of the Howe-Waffle House and served by volunteers. The \$10 ticket price entitled guests to a tour of the house, built in 1899 and regarded as one of the finest Queen Anne Victorians still in existence in Southern California.

Also on hand was artist Joan Chassey Bennet, demonstrating her talent on site and offering for sale watercolor portraits of vintage Santa Ana homes.

"This was a nice alternative to our usual holiday home tour," said coordinator Jo Ann Ramirez. "Maybe we should plan an outdoor tea for the spring."

Whither the Doctors?

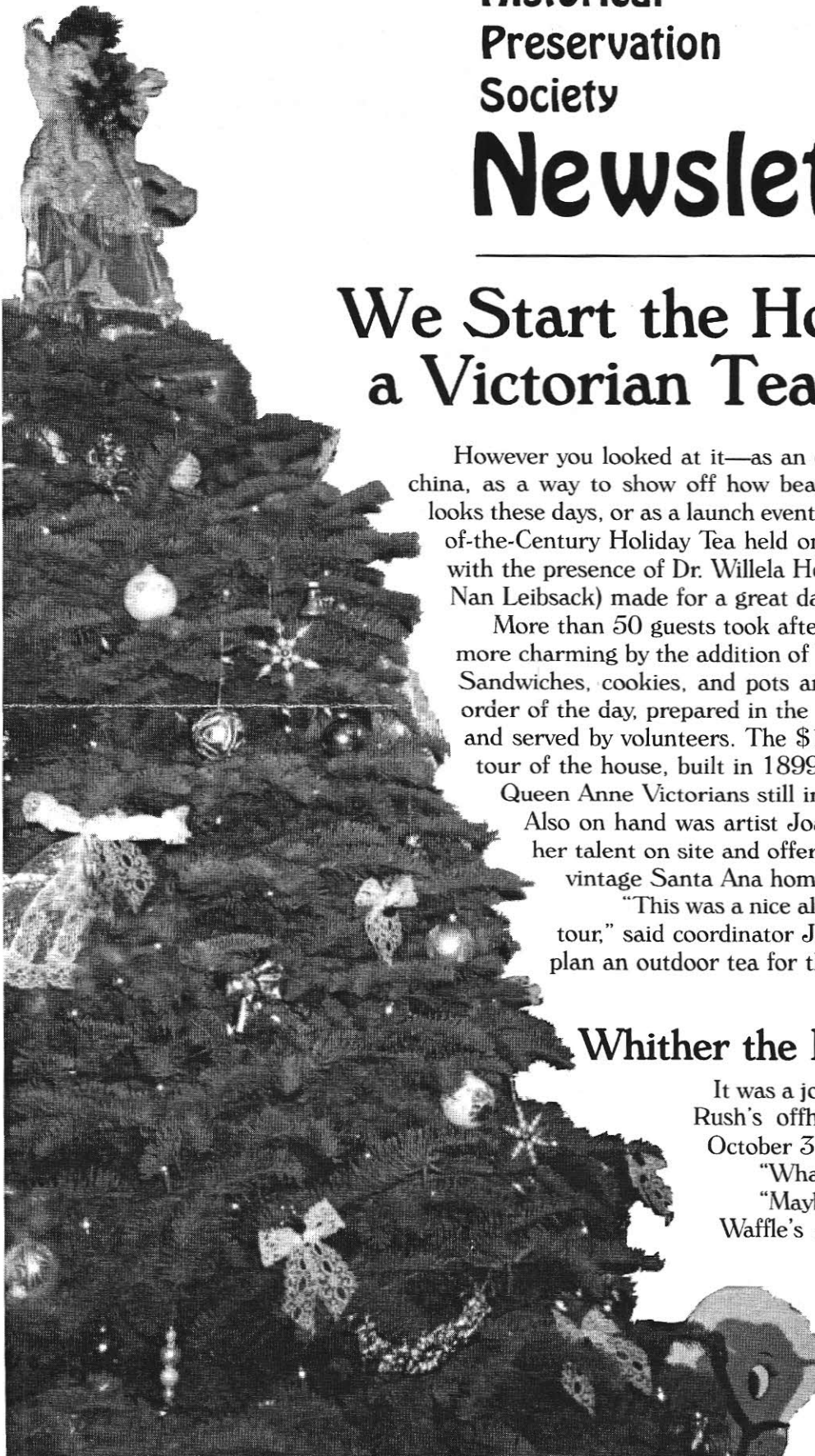
It was a joke, but before the day was out Tim Rush's offhand remark to Alison Young at the October 31 Cemetery Tour had made waves.

"What next?" a reporter had asked.

"Maybe next year we'll move Dr. Howe-Waffle's grave from Los Angeles to Santa Ana!" *Wink.*

"Why not?" Alison responded. *Wink.* But, sure enough, the next day's newspaper hinted at plans to relocate the doctor's grave, along with that of her husband, Dr. Alvin Jared Howe.

Continued, page 4



President's Message

Preservation of our community's physical heritage is an important part of Santa Ana Historical Preservation Society's mission. Along with sponsoring the more lighthearted SAHPS events, like teas and tours, we are increasingly becoming guardians of historic buildings throughout the city. Our success and failure in local preservation efforts has greater and greater impact as the number of vintage buildings in Santa Ana decreases over the years.

A major preservation success was accomplished recently through negotiations between SAHPS and Mike Harrah, president of Caribou Industries and developer of the One Broadway Plaza 44-story office tower project. At meetings arranged by Councilwoman Lisa Bist, a longtime SAHPS supporter, and City Development Manager Charles View, six historic buildings along the North Broadway corridor, slated for removal to make room for the tower parking lot, were saved. The possible relocation of two additional buildings on the block is still being negotiated.

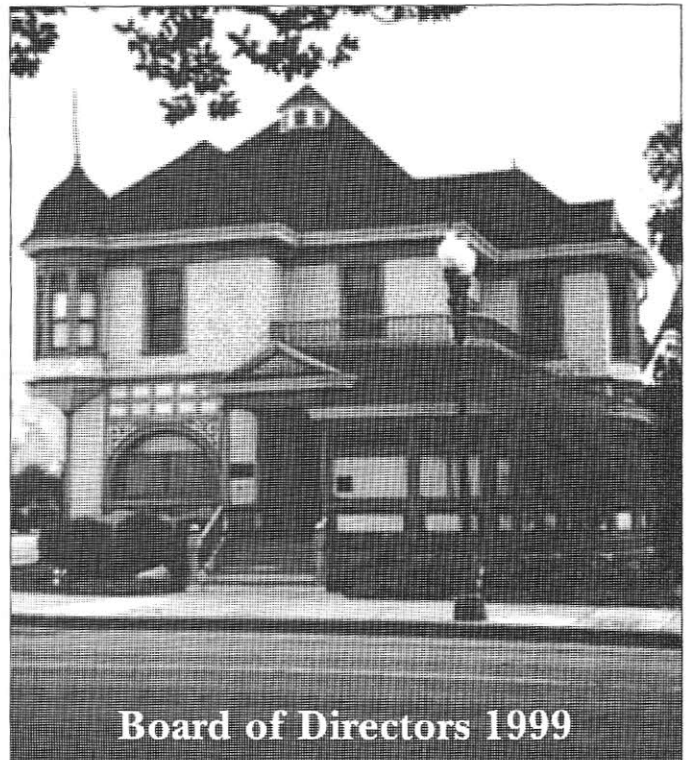
With support from Historic Commission President Rose Anne Kings and Orange County Historical Society's Richard Vining, an open dialog with Mr. Harrah revealed him as a history buff (he was responsible for moving London Bridge to the U.S.) with a vision of creating an expanded historic district in downtown Santa Ana.

Although we are not always able to save vintage buildings, we continue to salvage architectural elements, which we then make available for purchase by local residents. Salvage is demanding and dirty work, but a handful of dedicated SAHPS members and supporters continue to save pieces of history from the wrecking ball. Recently Debbie McEwan headed up a team including Paul Giles, Steve Cate and other residents of the Historic French Park Neighborhood to salvage a duplex in the 600 block of East Santa Ana Blvd.; over the Thanksgiving weekend, past SAHPS President Nathan Reed, Roberta Reed, Paul Giles, and I worked on two apartment buildings in the 800 block of North Broadway.

If you are contemplating restoration work, watch for details on salvaged items available for sale on the SAHPS website in coming months.—Alison Young



Board President Alison Young (shown here in the Howe-Waffle House kitchen during the Holiday Tea) is apparently as handy with a pot holder as she is with a gavel.



Board of Directors 1999

President Alison Young
Vice-President Tim Rush
Secretary Jo Ann Ramirez
Treasurer Guy Ball

Directors

Johnna Adams Ed Cote
Patty Haines Carol Leshner
Nan & Chris Liebsack Jim Marquez
Eris Smith John Sorenson

Nathan Reed Salvage Operations
Medical Historian Dr. Lawrence Serber

The *Santa Ana Historical Preservation Society Newsletter* is produced by the Society for its members and other friends. A membership application and renewal form may be found on the back page. We invite you to join us in the appreciation and preservation of Santa Ana history.

All material in this issue is copyrighted 1999 by the Santa Ana Historical Preservation Society, 120 Civic Center Drive West, Santa Ana, California 92701.

Newsletter Editor: Beverly Thompson
Contributors: Alison Young & Guy Ball

Our new Website: <http://www.santaanahistory.com>

Here's your annual reminder:

Attention, Members!

New or renewal memberships made in December 1999 apply to the year 2000.

Don't forget that SAHPS members receive discounted rates when renting the Howe-Waffle House for weddings, receptions, meetings, and other functions.

W99-p2



Our Cemetery Tour Makes Headlines!

The Second Annual SAHPS Cemetery Tour—held on October 31—brought Orange County's past to life in a big way, attracting

more media coverage than any event we've put on before. Starting the week before the tour and continuing up to, during, and after the event, the *Los Angeles Times*, the *Orange County Register*, other local newspapers and KNX radio let their readers and listeners know that the Santa Ana Historical Preservation Society was presenting this area's history in a wonderfully educational and entertaining manner.

More than 300 people took the tour, which left every half hour, lasted an hour, and explored both Santa Ana Cemetery and Fairhaven Memorial Park. At stops along the way costumed historical figures, enacted by members and friends of SAHPS, related stories of local pioneer families, suffragettes, Civil War veterans, ranchers, and robbers. If you were unable to take the tour, or somehow slept through the media blitz, Guy Ball has filled our web site with words and pictures to bring you up to date: www.santaanahistory.com.

—THANKS—

- Ed and Patty Cote, for the recent gift of sterling silver flatware, a service for six.
- State Senator Joseph L. Dunn for the flats of pansies, paid for out of campaign funds.

Improvements Continue, Thanks to Block Grant and Volunteers

SAHPS has been awarded \$500 via the Grants for Blocks Program sponsored by Downey Savings and Ralphs Food 4 Less Foundation. The SAHPS project will landscape the Civic Center and Sycamore sides of the house and install lawn sprinklers, with the help of volunteers from the Fire Department and the community. Interested in helping with this project? Leave a message for Jim Marquez at the Dr. Howe-Waffle House.

She Gets Our Vote!

It comes as no surprise that Board member Nan Leibsack (a.k.a. Dr. Willela Howe-Waffle) is a prize-winner—her efforts on behalf of SAHPS are always blue-ribbon. Nan's latest coup was winning the Best-Dressed Victorian Lady title at a Discovery Museum event in September. Congratulations, Nan!



Want to help dramatize Santa Ana history for grade-schoolers? Leave a message for Nan Leibsack at the Howe-Waffle House telephone number and volunteer to step into costume while you help schoolkids step into the past!

act now!

W99-p3

All Information Gratef'ly Rec'd...

Guy Ball responded to this e-mail that the writer might try the Library's Santa Ana Room. Or...?

Subject: Howe-Waffle House, 1943-47: As a child I spent many a day in the backyard of this old house. I remember a fish pond that was cleaned out just for me to wade in. I remember that the man of the house either made venetian blinds or repaired them. Most of all, I remember Rosann Hardcastle and me sitting on the back porch while she patiently peeled my sun-burned back. She was childless, so she "adopted" me when my Mom was agreeable.

Do you have any information on her or can you lead me to additional sources I might search for letters, clippings, and maybe some pictures?—Jim Kelly
Address: 29515 Abelia Road, Canyon Country, CA 91351,
E-mail: jimkk@the vine.net.

Wither Doctors? Continued from page 1

What next, indeed! Suddenly, offers of a cemetery plot, help with paperwork, and a horse-drawn hearse flew in. Also, it seems that the family of Dr. Howe-Waffle is not averse to the idea.

What began in jest may actually happen. Tim Rush is acting as coordinator for the project, but could use some helping hands in order to work out details. Call him at the Howe-Waffle House to offer your help. And stay tuned!

OCTA's CenterLine Proposal Not Supported by SAHPS Board

In a letter written on October 27, 1999, SAHPS President Alison Young pointed out to the Orange County Transit Authority that the impact studies for its proposed CenterLine train system failed to present adequate information and acceptable alternatives, such as relocation, for the disposal of affected properties. SAHPS would therefore be unable to support the project.

"Without knowledge of which specific properties would be destroyed, damaged or altered by construction," the letter ran, "...and without alternative mitigation proposals, the Santa Ana Historical Preservation Society is opposed to all three alternatives as presented...If these concerns are addressed specifically in future CenterLine plans, the Society would be happy to again review the materials and make a determination."

We Could Use...

- teapots
- serving pieces: tongs, slotted and unslotted spoons, & forks
- 5'x8' nylon American flags; they cost about \$88, and we go through 3 or 4 a year.



LEND A Hand?

Participate in the Santa Ana Historical Preservation Society Membership & Gift Program.

For you, for your family, for a friend, **Membership** in the SAHPS is for anyone with an interest in history or in helping to preserve Santa Ana and Orange County heritage. The amount of your dues can vary depending on your generosity:

YES, I would like to become a member of SAHPS or renew my current membership.
Individual \$10-\$30 Family \$15-\$49 Organization/Business \$20-\$49
Supporter \$50-\$99 Patron \$100 or more

Or, your gift through the **Make History Live** program will help us meet goals we 25 years ago:

YES, I want to **Make History Live** through my gift of
\$25. \$50. \$100. \$ _____

Please make checks payable to SAHPS and mail to:

SAHPS, 120 Civic Center Drive West, Santa Ana, CA 92701

Include your name, telephone number, and address, complete with zip code.

Remember, membership and donations to the Santa Ana Historical Preservation Society are tax deductible!

Thank you for your support!

A Reminder—Businesses can support the SAHPS with tax-deductible donations to our **Making History Live Program**. Call (714) 547-9645 or visit our website, www.santaanahistory.com, if your business would like to help.

Santa Ana...An Illustrated History

Covering Santa Ana history from the mid-1800s to modern times, Diann Marsh's fine book includes many never-before-published photographs, some from private collections. Price: \$35.50 hardbound or \$21.50 softbound, plus \$3.00 shipping and handling.



Santa Ana Historical Preservation Society Commemorative Afghan

Cover up in a warm afghan that features woven images of the Dr. Howe-Waffle House and other historic Santa Ana buildings. Williamsburg blue, navy, or hunter green, contrasted with natural. \$43.00 (members) or \$47.00 (non-members), plus \$5.00 for priority mailing.

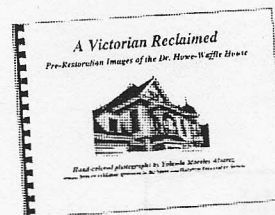


Dr. Howe-Waffle House & Medical Museum Coffee Mug

Start your morning right, with this china mug. Makes a great gift! \$5.50

A Victorian Reclaimed

This lovely 12-page book features a beautiful black & white, hand-colored photographs of the Dr. Howe-Waffle House, taken by Yolanda Alvarez in the days before the house was restored. Deluxe edition \$35.00, annotated \$15.00.



Dr. Howe-Waffle House & Medical Museum...

Framed Postcard—signed by the artist, \$8.50.

Note Cards—12 folding cards & envelopes, \$5.00.

Prices include California sales tax.

Join the "Friends of Mrs. Walker"

To get more involved with the Santa Ana Historical Preservation Society, why not join the "Friends of Mrs. Walker?" If you have a special skill, an area of expertise, or the time and desire to help with Society projects throughout the year, but can't commit to regular meetings, then "Friends" is the group for you!

As a "Friend of Mrs. Walker" you might choose to

- serve on a fund-raising, property-improvement, or event-planning committee
- or assist with an event by docenting, passing out flyers, baking cookies
- or help catalog our collections or decorate for events
- or help locate speakers, or collections to display
- or contact businesses for support through donations, raffle prizes, advertising

We ask no minimum commitment—if you can't help out on one project, we'll simply call again, when we need you for another project. Once a year or every month, your participation is valuable and appreciated.

We look forward to getting to know you better!

Mrs. Adeline Walker and a dedicated group of fellow volunteers were responsible for the preservation, moving, and restoration of the Dr. Howe-Waffle House, headquarters of the Santa Ana Historical Preservation Society. The Society still operates as an all-volunteer organization that relies on assistance from members of the community to plan and carry out projects throughout the year.

Yes/I'd like to support the Santa Ana Historical Preservation Society as a "Friend of Mrs. Walker":

Name _____

Phone _____

Address _____

I am interested in helping with _____

I can offer expertise in _____

mail to Santa Ana Historical Preservation Society,

Friends of Mrs. Walker

120 Civic Center Drive West, Santa Ana, CA 92701

or call Alison Young at 714/569-9225 for more information

W99 - pg 5



Santa Ana
Historical Preservation Society
120 Civic Center Drive West
Santa Ana, California 92701

Non Profit Org.
U.S. Postage
Paid
Santa Ana, CA
Permit No
1615

10000 E. 10th Ave.
10000 E. 10th Ave.
OUSTON, KA 92700

W99-p6

92780+

