



**Santa Ana
Historical
Preservation
Society**

Founded 1974

Newsletter

Fall 1999

History Will Come Alive at Fall Event

We're hoping to repeat the size of the crowds at the second annual SAHPS Fall event, this year titled Historical Harvest Tour. We're also repeating the sites of the event: Fairhaven Memorial Park and Santa Ana Cemetery in Santa Ana. And, as before, actors and actresses will be re-enacting some of the salient moments in Orange County history.

Sheriff Lacey is expected to make an appearance on the Saturday, October 30 tour, and if the Manilas Gang shows up, never fear—they're only actors!

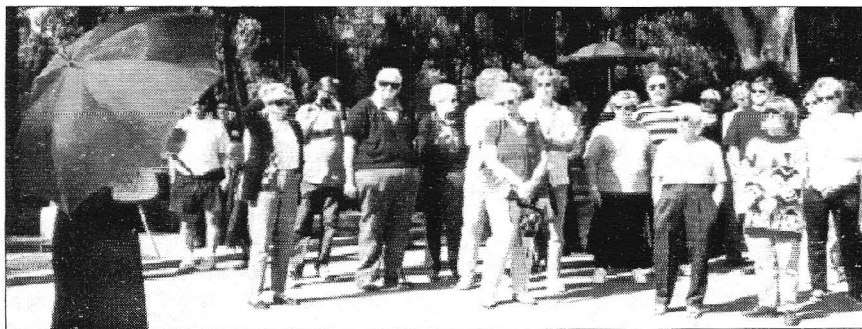
Among other interesting tidbits of history to be imparted is the story of Burruel Point, later called the Town of Olive and now part of the city of Orange. The character of Maria Yorba, who was married to Mr. Burruel, will tell the story, and will no doubt describe how things were in Orange County in the days when much of it was incorporated in the Yorba Hacienda.

The price of admission will be \$10 (\$8 for seniors). The guided tour through the two cemeteries, with stops for the various scenarios, is expected to last about 1½ hours. It will definitely be a day for walking shoes, hats, sun block, and a lively interest in things historic, especially as they apply to Orange County.

Dr. Howe-Waffle will be on the scene, possibly in a horse and buggy like the one she drove to so many of her patients' homes over her long career as one of Orange County's first female physicians.

If you'd like to participate in the Historical Harvest Tour, as an actor or guide, call Patty Haines at 714/491-7491.

At last year's event, this tour guide had the crowd's full attention.



President's Message

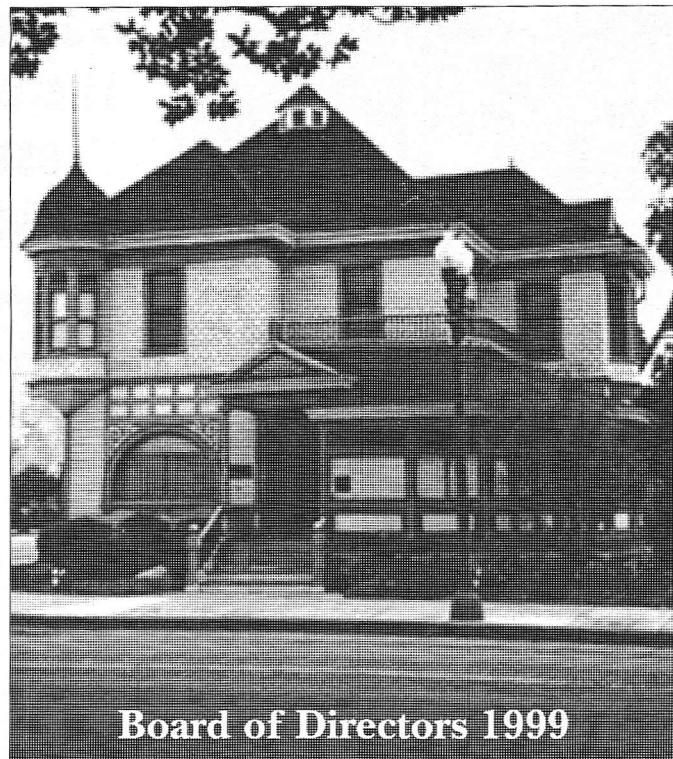
A community effort to preserve a single important historic building, the Dr. Howe-Waffle House, led to the creation of the Santa Ana Historical Preservation Society. Now, 25 years later, SAHPS faces challenges that have become more complex over the years.

As the year 2000 approaches, prognosticators in Orange County—with an eye on Santa Ana in particular—predict unprecedented growth in population and business. As a result, the Society is increasingly called upon to work in concert with developers and local government agencies to safeguard our physical heritage. In recent months I have represented SAHPS at meetings about the proposed Broadway/Main Street CenterLine light rail project and about the proposed 44-story Broadway office tower. In addition, the Masonic Hall on Sycamore and the Christian Scientist Church on Main Street are both being considered by a developer for historic restoration and for community art and theater use, considerations that we need to address.

The seeming renaissance of Santa Ana has been demonstrated by the current success of the Museum and Arts Districts, the city's strong neighborhood organizations, and building projects like the Ronald Reagan Federal Courthouse and the new corporate offices of the First American Title Company. The Santa Ana Historical Preservation Society continues to progress and grow, in step with the city of Santa Ana. Inevitable changes in our community over time will continue to help the Society mature into an organization recognized in the County as a major participant in the preservation of historic structures and artifacts.

While we continue to have fun as a community-based volunteer organization, we also recognize that the real business of our membership is to act as guardian of Santa Ana's history and to remain active participants in preservation and research. Our work with the City, with the Historic Resources Commission, and with the Santa Ana Council on Arts and Culture; the historic research class that we recently conducted in the library's History room; an upcoming lecture on local Civil War veterans; and plans for a Santa Ana archive (see the article on page 3 of this issue) are all part of this plan.

Please take pride in the fact that your support for SAHPS is a vital part of supporting these goals.—Alison Young



Board of Directors 1999

President Alison Young
Vice-President Tim Rush
Secretary Jo Ann Ramirez
Treasurer Guy Ball

Directors

Johnna Adams Ed Cote Patty Haines
Anthony Reichardt Carol Leshner
Nan & Chris Liebsack Jim Marquez
Eris Smith John Sorenson

Nathan Reed Salvage Operations
Medical Historian Dr. Lawrence Serber

The *Santa Ana Historical Preservation Society Newsletter* is produced by the Society for its members and other friends. A membership application and renewal form may be found on the back page. We invite you to join us in the appreciation and preservation of Santa Ana history.

All material in this issue is copyrighted 1999 by the Santa Ana Historical Preservation Society, 120 Civic Center Drive West, Santa Ana, California 92701.

Newsletter Editor: Beverly Thompson

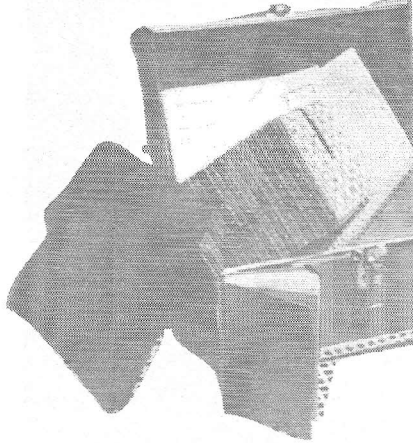
Contributors: Alison Young, Nan Liebsack, & Guy Ball

Our new Website: <http://www.santaanahistory.com>

Three Resign

The masthead above features fewer names with this issue of the *SAHPS Newsletter*. Citing personal time constraints, three newly elected members of the Santa Ana Historical Preservation Society's Board of Directors recently—and reluctantly—resigned. Tony Kimball, Jane Robertson, and Wendy Zander will most assuredly be missed.

What's Hiding in Your Attic?



We're searching for materials for our archives, and we're asking SAHPS members to help.

In an effort to create cross-referenced files at the Howe-Waffle House for researching local history, assembling exhibits, producing booklets and newsletter articles, and keeping our website in tune with today's needs, we're looking for letters, photographs, clippings, and such that relate to Santa Ana families and history. We would photocopy your precious materials, then return your originals and one photocopy to you. We would also donate a copy of the materials to the Santa Ana library History room.

What you may regard as quaint family mementoes could be a rich archival harvest for SAHPS!

How's the Howe-Waffle House?

Doing nicely, thanks. As reported in the last newsletter, Nathan Reed has finished construction on the second level of the Carriage Barn, including a new staircase.

The House's kitchen porch has been repainted.

And, the House's second floor is now fully climate-controlled, with new heating and cooling units installed. The project was made possible by a Community Development Block Grant. It came in under budget, so leftover funds will be applied to other projects.

We Can Help Bring History to Schools

SAHPS has received a small CDBG grant for a "Living History in the Schools" program, and is seeking seamstresses, prop builders, planners, actors, writers and researchers to help make history live in Santa Ana schools. Call Nan Liebsack at 714/547-9645.

Lecture Series Continues

On Tuesday, September 24, as part of the SAHPS-sponsored lecture series, Gordon Bricken, former Santa Ana mayor and a specialist in local history, will speak about "Civil War Veterans Buried in Orange County."

According to Gordon, both Confederate and Union Civil War veterans are buried in Orange County graveyards; all have a heroic tale to tell, many of which Gordon will share with his audience.

The lecture will take place at the Howe-Waffle House, 120 Civic Center Drive West, at 7:30 p.m. Light refreshments are also on the docket.

WATCH FOR DR. WILLELLA HOWE-WAFFLE (NAN LIEBSACK) AND HER DEVOTED COOK, JULIA (PATTY HAINES), TO MAKE AN APPEARANCE AT THE SEPTEMBER 26 1890S MARKET DAY AND FAIRE AT THE DISCOVERY MUSEUM.

Calendar

First weekend of each month—Open House at the Howe-Waffle House,

Sat. 10 a.m. to 4 p.m.; Sun. noon to 5 p.m.

September 14—Lecture by Gordon Bricken: "Civil War Veterans Buried in Orange County," 7 p.m., Howe-Waffle House

September 27—Lecture by Greg MacGregor, in conjunction with "Overland: The California Emigrant Trail" photograph exhibit, Old Orange County Courthouse Museum, noon.

October 2 & 3—Washington Square Neighborhood Home & Garden Tour, 10 a.m.—4 p.m., \$12 (\$10 presale), 714/284-5434

October 9—Santa Ana ArtWalk; Wilshire Square Neighborhood Plein-Air Affair Art Festival & Tea; Saint Joseph Ballet New Facility Opening

October 22-24—Building Bridges to Orange County History, 3-day event, vicinity of Old Orange County Courthouse

October 30—Historical Harvest Tour—SAHPS's second annual Fall event, 10 a.m. to 4 p.m., Fairhaven and Santa Ana Cemeteries

New Benefits for Members

It's a new policy, and a good one: Current Santa Ana Historical Preservation Society members are eligible for discounted rates when renting the Dr. Howe-Waffle House for weddings, receptions, business meetings, and other functions.

Call the Society for additional information.

The Buck Stopped Here

Congratulations are defininetly in order for two of our new volunteers, Patricia Bunning and Lisa Zuker and for Board Member Johnna Adams.

On Saturday, August 7, the three ladies were conducting their very first public tours of the Dr. Willella Howe-Waffle House. They must have delivered their Tour Guide scripts flawlessly, for as one tour patron was leaving, he left a \$5.00 tip! Great job, ladies! Keep up the good work.

Perhaps you would like to become a Tour Guide and have the opportunity to dazzle visitors to the Dr. Howe-Waffle House with your knowledge. Why not call Nan Liebsack at 547-9645 and volunteer?

The House is open for public tours the first weekend of each month.—*Nan Liebsack*

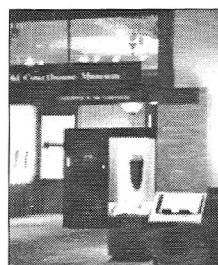
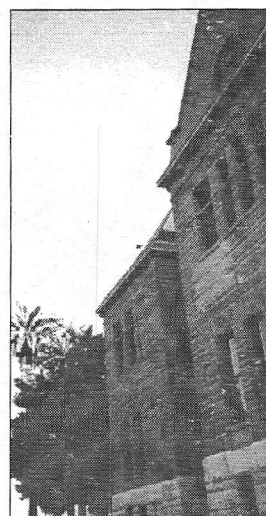
Lecture to Accompany Exhibit at Old Courthouse

At noon on September 27 Photographer Greg MacGregor will speak at the Old Courthouse Museum in conjunction with a photography exhibit titled "Overland: the California Emigrant Trail." Greg's photos, which document the overland route to California and Oregon that was taken by 300,000–500,000 pioneers between 1841 and 1869, is featured.

Greg's talk comes on the last day of the show; since it occurs a noon, visitors

may bring a sack lunch. Following the lecture, he will sign copies of a book of his Overland trail photos.

Located in the landmark Old Orange County Courthouse at 211 W. Santa Ana Boulevard, the Old Courthouse Museum is open Monday—Friday, 9 a.m.—5 p.m.



LEND A Hand?

Participate in the Santa Ana Historical Preservation Society Membership & Gift Program.

For you, for your family, for a friend, **Membership** in the SAHPS is for anyone with an interest in history or in helping to preserve Santa Ana and Orange County heritage. The amount of your dues can vary depending on your generosity:

YES, I would like to become a member of SAHPS or renew my current membership.

Individual \$10–\$30 Family \$15–\$49 Organization/Business \$20–\$49

Supporter \$50–\$99 Patron \$100 or more

Or, your gift through the **Make History Live** program will help us meet goals we 25 years ago:

YES, I want to **Make History Live** through my gift of

\$25. \$50. \$100. \$ _____

Please make checks payable to SAHPS and mail to:

SAHPS, 120 Civic Center Drive West, Santa Ana, CA 92701

Include your name, telephone number, and address, complete with zip code.

Remember, membership and donations to the Santa Ana Historical Preservation Society are tax deductible!

Thank you for your support!

A Reminder—Businesses can support the SAHPS with tax-deductable donations to our **Making History Live** Program. Call (714) 547-9645 or visit our website, <http://www.santaanahistory.com>, if your business would like to help.

Santa Ana...An Illustrated History

Covering Santa Ana history from the mid-1800s to modern times, Diann Marsh's fine book includes many never-before-published photographs, some from private collections.
Price: \$35.50 hardbound or \$21.50 softbound, plus \$3.00 shipping and handling.



Santa Ana Historical Preservation Society Commemorative Afghan

Cover up in a warm afghan that features woven images of the Dr. Howe-Waffle House and other historic Santa Ana buildings. Williamsburg blue, navy, or hunter green, contrasted with natural.
\$43.00 (members) or \$47.00 (non-members), plus \$5.00 for priority mailing.



Dr. Howe-Waffle House & Medical Museum Coffee Mug

Start your morning right, with this china mug.
Makes a great gift! \$5.50

A Victorian Reclaimed

This lovely 12-page book features a beautiful black & white, hand-colored photographs of the Dr. Howe-Waffle House, taken by Yolanda Alvarez in the days before the house was restored.
Deluxe edition \$35.00, annotated \$15.00.



Dr. Howe-Waffle House & Medical Museum...

Framed Postcard—signed by the artist, \$8.50.

Note Cards—12 folding cards & envelopes, \$5.00.

Prices include California sales tax.

Join the "Friends of Mrs. Walker"

To get more involved with the Santa Ana Historical Preservation Society, why not join the "Friends of Mrs. Walker?" If you have a special skill, an area of expertise, or the time and desire to help with Society projects throughout the year, but can't commit to regular meetings, then "Friends" is the group for you!

As a "Friend of Mrs. Walker" you might choose to

- serve on a fund-raising, property-improvement, or event-planning committee
- or assist with an event by docenting, passing out flyers, baking cookies
- or help catalog our collections or decorate for events
- or help locate speakers, or collections to display
- or contact businesses for support through donations, raffle prizes, advertising

We ask no minimum commitment—if you can't help out on one project, we'll simply call again, when we need you for another project. Once a year or every month, your participation is valuable and appreciated.

We look forward to getting to know you better!

Mrs. Adeline Walker and a dedicated group of fellow volunteers were responsible for the preservation, moving, and restoration of the Dr. Howe-Waffle House, headquarters of the Santa Ana Historical Preservation Society. The Society still operates as an all-volunteer organization that relies on assistance from members of the community to plan and carry out projects throughout the year.

Yes! I'd like to support the Santa Ana Historical Preservation Society as a "Friend of Mrs. Walker":

Name _____ Phone _____

Address _____

I am interested in helping with _____ I can offer expertise in _____

mail to Santa Ana Historical Preservation Society,

Friends of Mrs. Walker

120 Civic Center Drive West, Santa Ana, CA 92701

or call Alison Young at 714/569-9225 for more information

F99



Santa Ana
Historical Preservation Society
120 Civic Center Drive West
Santa Ana, California 92701

Non Profit Org.
U.S. Postage
Paid
Santa Ana, CA
Permit No
1615

ORDINARY AND PLEASANT
FEDERAL MAIL PERMIT NO. 1615
POSTAGE & FEES PAID
SANTA ANA, CA 92701-2648

F99