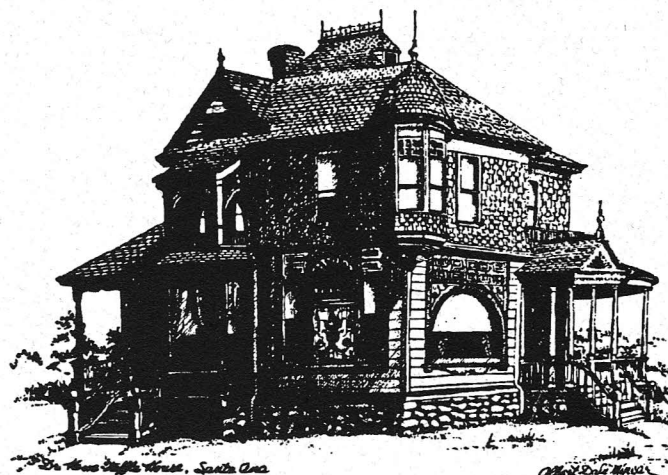


Santa Ana Historical Preservation Society NEWSLETTER



Founded 1974

Winter 1992-93

Editor: Guy Ball

Santa Ana Historical Preservation Society 1992-93 Board of Directors

President

Scott Morgan

Vice-Presidents

Max & Connie Becker

Secretary

Judy Moore

Treasurer

Guy Ball

Directors

Marlene Brajdic

Gregg Bunch

Margaret Harwood

Diann Marsh

Donald Moore

Nancy Morgan

Ann Randall

Paula Rankin

Robert Rusby

Bryan Smith

Becky Stone



The renovated and recently reopened Bowers Museum of Cultural Art is the Santa Ana Historical Preservation Society's Winter Quarter Preservation Award Winner - see story on page 4.

Annual All-Member Dinner

*You are cordially invited to attend the
annual dinner meeting of the
Santa Ana Historical Preservation Society
on Tuesday, February 16, 1993.*

*No Host Bar begins at 6:30 p.m.
Southwest Buffet Dinner and Program at 7:00 p.m.*

The Hacienda Restaurant

1725 College Avenue

(North off 17th Street West of Bristol)

RSVP to Nancy or Scott Morgan at 953-4049 by Feb. 13
You may pay at the door - \$17.50 per person.

President's Message

As you recall, last issue's President's Message was the first of two columns I have dedicated to some of the star volunteers of the Santa Ana Historical Preservation Society. This is the second column written in honor of a few of our great volunteers.

First, I would like to thank my wife, **Nancy Morgan**. Nancy not only supports me in my duties as President, but she is a leader in the Santa Ana Historical Preservation Society in her own right. Nancy was the General Chairman of our very successful Victorian Holiday Progressive Dinner in December and is organizing our annual membership dinner in February (for the second year in a row).

The second SAHPS star I would like to thank is **Jim Marquez**. Jim recently organized a work party at the Waffle House to clean windows and drapes. He showed us how a real professional gets the job done! Jim also helped to organize our first SAHPS Halloween event together with Board Member **Bryan Smith**. Thanks to Jim and Bryan, a fun evening was had by all.

Another star deserving of our thanks and appreciation is a person who continues to actively participate in SAHPS activities despite having recently moved out of town all the way to Rialto! Our organization can always count on the wonderful **Ann Randall** to help out with whatever needs to get done. Thanks, Ann!

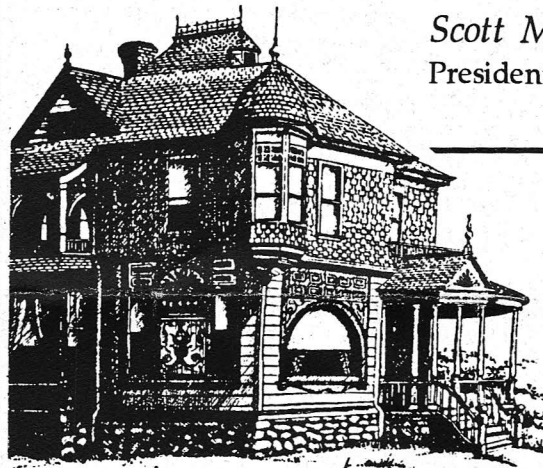
Paula Rankin is a relative newcomer to the SAHPS board. Paula has jumped right in to help out on work days, in planning and organizing SAHPS events, and giving tours. We are very appreciative of Paula's great energy and enthusiasm.

Another terrific newcomer to the SAHPS Board is **Becky Stone**. Becky

has brought new ideas and enthusiasm which serves our organization well. Thanks, **Becky**, for all your good work at SAHPS events, work parties, etc.

In closing, I'd like to invite all of you to our members' annual dinner. This is our opportunity to get together and enjoy each other's company as well as to honor those in our city that have made a major effort to preserve a part of Santa Ana's history. Details about the dinner are on the first page of this newsletter, and there is still time to call in your reservation. We hope to see you there!

Scott Morgan
President



The *Santa Ana Historical Preservation Society Newsletter* is produced by the Society for its members and other friends. A membership application and renewal form is on the back cover.

All material in this issue is copyrighted 1993 by the Santa Ana Historical Preservation Society.

Editor: Guy Ball

Special Graphic Assistance:

Tracey Wolfert, WolfTree Services.

Contributing writers and photographers for this issue include Jim Marquez, Diann Marsh, Nancy Morgan, Scott Morgan, and Bryan Smith.

Our mailing address is: **SAHPS**,
120 Civic Center Dr. West,
Santa Ana, CA 92701.

Quarterly SAHPS Preservation Awards Announced

The Santa Ana Historical Preservation Society is pleased to award the Fall 1992 Quarterly Preservation Award to Naomi Estrine for her restoration and care of her Craftsman style home at 1720 N. Poinsettia in Santa Ana.

This fine example of the Craftsman style was built in 1909, the heyday of the Craftsman movement, by Herman Enderle (owner of the Foundry and Machine Shop). The house features a two story, gabled roof with Siamese gable dormers. The dormers feature ornamental barge boards and rafter tails, lattice venting, carved bracket supports, and a frieze with side spaced dentils. The porch overhand is supported by decorative elephantine piers while the porch balustrade features jigsaw balusters.

Sisters Katherine, Clara, and Matilda Enderle were the first to live in the house and did so until about 1922. Katherine was a student, Clara taught school in Tustin, and Matilda was the assistant secretary of the Orange County Mutual Fire Insurance Company.

The next owners were the Blower Family, including Phillip and his wife Polly, who lived there for many years. The Blower family originally owned Blower's Service Station which became Duke Blower Rentals. In 1976, the Blowers sold the house to William Blackwell and his family who lived there for the next twelve years.

In 1988, Naomi Estrine bought the home which was in a state of great disrepair. The

paint flaking off the outside walls laid proof to a lack of timely painting and maintenance. The house's roof and foundation were in even worst condition with both in need of some major reconstruction work. Over the last few years, Naomi has brought the house back up to it's original elegance including



construction of a new 8 car garage built to match the home, a lattice green house, and a regulation size tennis court.

The home was one of the featured homes at this year's SAHPS Victorian Holiday Progressive Dinner.

Congratulations, Naomi, for your wonderful restoration of one of Santa Ana's finer historic homes.

Read about the other Quarterly Preservation Awards on page 4. Certificates will be presented at our annual dinner in February.

Membership Dues Are Due

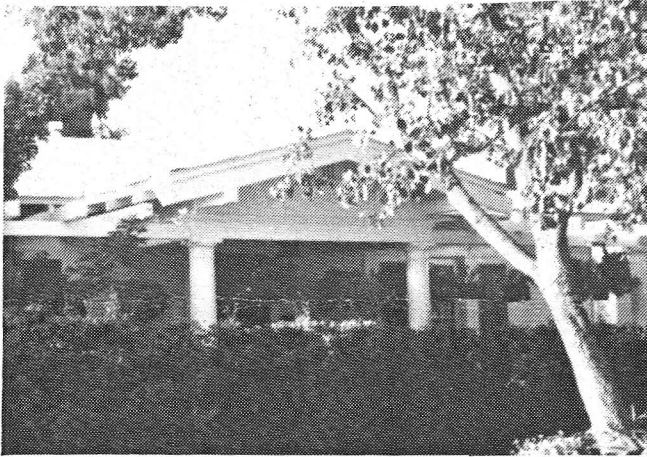
We rely on your membership dues to continue our preservation efforts, our educational programs, and our social events. In addition, the Santa Ana Historical Preservation Society is also responsible for the day-to-day upkeep of the beautifully restored Dr. Howe-Waffle House and we pay for all of its utilities and insurance.

Our organization is run completely by volunteers so your support means so very much. If you haven't sent in your 1993 dues, please do so now. (If you have, thank you!)

The Bartron House

The Santa Ana Historical Preservation Society announces that the Summer 1992 Quarterly Preservation Award goes to Barry Bartron and Kay Long for the restoration of their home on 324 E. Bishop. Barry and Kay, both school teachers, have meticulously tried to maintain the integrity of the house's original architecture as they worked to restore it's original beauty.

The California Bungalow style home was built in 1923 by Walter and Minnie Vieira who were a well known Hispanic family in Orange County. Walter by himself, and later in conjunction with his daughter Mildred, owned and operated several beauty and barber shops in Santa Ana.



The Bowers Museum

The Bowers Museum of Cultural Art is the recipient of our Winter Quarterly Historic Preservation Award. The award was given for their efforts at retaining, restoring, and highlighting the gracious beauty of the Spanish-style architecture of the original structure as they added some 50,000 square feet of additional exhibit space.

The Bowers Museum, first built in 1936 from a trust given to the City of Santa Ana from Charles and Ada Bowers, is now the premiere American museum of cultural exhibits and collections featuring the fine arts of native peoples in the Americas, Pacific Rim, and Africa.

The entry courtyard with the bell tower, Courtyard of the Governors, and the veranda continues to provide a romantic, Spanish-

1992 SAHPS Historic Preservation Awards

The Vieira's lived in the home until 1947 when they sold it to Elmer and Vera Deaver. Unfortunately Mr. Deaver suffered a stroke in May of '48 limiting his ability to make repairs himself on the home.

Mrs. Deaver wrote to the current owners noting she remembers when the Red Car Line ran just a block away from the house.

In 1974, Barry and Kay purchased the home and found the home in need of extensive repair due. Their efforts included stripping and sanding the outside paint (which was already coming off in big flakes), re-roofing, and a lot of interior work.

The owners attention to the original structural integrity includes the painstaking match of the original clapboard siding, fascia boards, and other detail work when replacements were necessary. The original woodwork was all stripped and stained and they remodeled the bathroom to the style of the 1920's.

If you get a chance, drive through the Eastside Neighborhood and take a look at the fine restoration of this beautiful California Bungalow.

style setting that has been a big draw for weddings, receptions, and special parties. The recently opened addition has added a wonderful new bistro style restaurant, the *Topaz*, which provides dining for museum patrons and those who just want to try someplace different. A new gallery shop contains an eclectic selection of distinctive objects from around the world.

The original Orange County History Room has been meticulously cleaned and restored, offering the historic artifacts of early Santa Ana, Orange, And Anaheim.

Recent and current shows in the spacious main galleries have included a blockbuster exhibit of pre-Columbian artistry, a collection of contemporary art from Thailand, and even a exhibit of paintings and sketches by the artist who created the original conceptual drawings of Disneyland.

Victorian Progressive Dinner - A Grand Success

Almost 180 people came out to experience this year's SAHPS Fourth Annual Victorian Christmas Progressive Dinner.

The dinner sites were varied including appetizers at the home of Naomi Estrine, soup at Diann and Robert Marsh, salad at the home of Jim Marquez and Bryan Smith, main course at the Presbyterian Church, and desert back at the Dr. Howe-Waffle House.

The event proved to be a successful fund raiser for the Society with close to \$1900 raised after expenses. That'll sure help pay the insurance bill on the Howe-Waffle House.

A big thank you to all those who participated and especially those who donated their homes and welcomed all the guests for the Progressive Dinner.

For those of you who missed it, make sure to be on the look out for the December 1993 Progressive Dinner and send in your reservations early.

Docents Wanted

If you'd like to take the upcoming SAHPS co-sponsored garden tour for free, consider volunteering a few hours of your time as a docent. You can pick the morning or afternoon shift. Call Becky at 586-7793.

Mailing Labels A Reality

It's been years in the making, but it looks like we're finally getting into the computer age. Board member (and Garden Tour chair) Gregg Bunch has been inputting all of our varied lists into one master mail list.

Now, we'll be able to *quickly* tell current members from dinner guests from Waffle House visitors. Previously, this was all done by hand in the wee hours of the morning.

But it's all based on the quality of information we've given Gregg - so there may be a mistake or two. If you do have any changes for Gregg, give him a call at 838-9642.

Upcoming Local Home & Garden Tours

March 27 -- Garden Tour, Victorian Tea, and Spring Boutique (Tustin and Santa Ana) ... jointly sponsored by the Tustin Area Historical Society and the Santa Ana Historical Preservation Society (Tustin & Santa Ana) ... eight unique, private gardens, 10 am to 5 pm. See ad on page 7 for additional information.

April 3 & 4 -- Historic French Park Neighborhood Home Tour (Santa Ana) ... a variety of historical Victorian style homes, 10 am to 4 pm. Tickets are \$10, \$8 in advance. For further information, call 543-2079 or to purchase tickets, write Historic French Park Association, 301 E. 8th St., Santa Ana, 92701.

April 24 & 25 -- Floral Park Neighborhood Home Tour (Santa Ana) ... 9 houses and 3 gardens, antique car display, collectable sale, 10 am to 4 pm. Tickets are \$12.50. Call Sandy DeAngelis at 547-2439 for more information.

June 5 & 6 -- Wilshire Square Neighborhood Fifth Annual Historic Home Tour (Santa Ana) ... 8 houses and 4 gardens, antique cars, neighborhood storytellers, 10 am to 4 pm, \$9 (advance \$6.50). Call Lisa Bist at 760-3762 for more information or send for tickets to Wilshire Square Neighborhood, P.O. Box 2441, Santa Ana, 92707.

The four Santa Ana groups share a common mailing list of people interested experiencing a bit of yesterday by touring older homes. If you'd like to be on the list to get tour fliers from each of the Santa Ana groups and neighborhoods, send you name and address to Tour List; c/o *Eye on Santa Ana*; P.O. Box 2422; Santa Ana, CA 92707.

Bits & Pieces

Member Meeting/Open House

This spring, the SAHPS Board is planning to host a special membership meeting and open house including a special historical presentation.

We're setting a final date and time which we'll let you know in the next issue. We want to offer members a chance to get more involved in the Society.

If you'd like to volunteer your help, please call Scott at 953-4049.

Historic Book Still In Works

In case you were wondering about the status of *Santa Ana: An Illustrated History*, 125th Anniversary Edition, we're happy to say it's still in the plans for a Christmas 1993 publication date.

The book, a joint publication of the Society with the Heritage Publishing Company of San Diego, will be a larger, coffee table-style text and feature an overview of Santa Ana's history complete with old photographs, many never before published. Special sections are planned for histories of key families, businesses, and non-profit organizations.

Just like many other early Orange County history books, part of the funding for the book comes from businesses and families who purchase a half or full page and then get the opportunity to feature their story and history in that space.

Our very own Ace Santa Ana Historian Diann Marsh is providing much of the writing for the book with Board Member Todd Walsh working with her on research and photography.

They are still looking for early Santa Ana photos in case our readers have any.

If you'd like more information on the book, either to provide photos or to get more information on funding a section to include the history of your family or business, call Diann at 541-2441.

Waffle House Open House

At a recent meeting, the Board decided to change the dates of the Dr. Howe-Waffle House's regular open house to the second Sunday of every other "odd" month. If you'd like a chance to see the beautiful splendor of one of the largest and most impressive Queen Anne houses in Orange County (and one of the most beautifully restored), come on down for a visit.

We're open from 11 am to 2 pm at 120 Civic Center Dr. (just west of Main, at the corner of Sycamore and Civic Center). Members are free and guests are welcome for just a \$2 donation.

Enjoy a leisurely tour back into the late 1800's in one of the few Victorian style house museums in the county. The open days for the rest of 1993 are March 14, May 9, July 11, September 12, and November 14.

House Moving Time

The Historic French Park Neighborhood Association (located just to the northeast of the Waffle House) is looking to move another older home into their neighborhood. The Association has a long history of moving homes of another era onto vacant lots in their neighborhood to build on their already rich historical fabric.

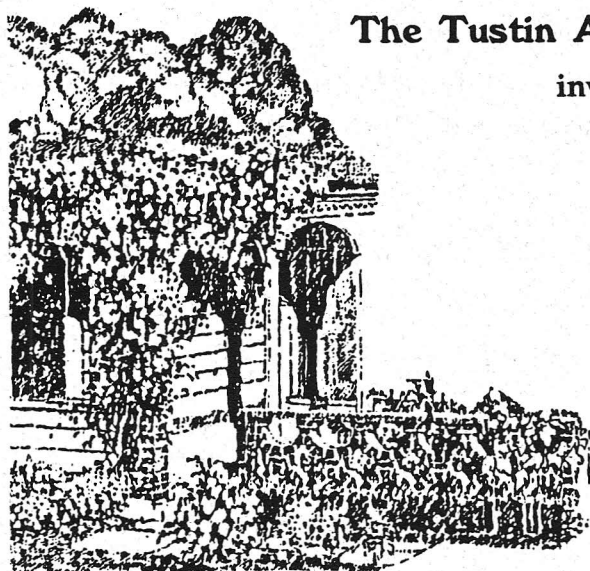
The new house is a Craftsman Bungalow from the Washington Square Neighborhood that might have ended up leveled to open up space for an important new medical center. The property owners, F.H.P., jumped at the chance to save this early 20th century constructed home when approached by the French Park Neighborhood and City of Santa Ana Housing Department staff.

The neighborhood plans to move the house to a vacant lot at 820 North Lacy Street sometime this month or next. The Santa Ana City Council as well as the City's Housing and Planning Departments' staff members also deserve a big pat on the back for helping French Park save yet another piece of early Santa Ana.

**The Santa Ana Historical Preservation Society
and**

The Tustin Area Historical Society

invite you to our



*Victorian Tea,
Garden Tour,
and
Spring Boutique*

Saturday, March 27, 1993 10 a.m. to 5 p.m.

Come with us and enjoy a very pleasurable day in March. Our Victorian-style Tea will be held at the historic and beautifully restored Queen-Anne Victorian, Dr. Howe-Waffle House. The self-guided Garden Tour will bring you to seven beautiful, local private gardens in Tustin and Santa Ana. The Spring Boutique will be held in the gardens of the Stevens Mansion.

You may begin the tour at either the Dr. Howe-Waffle House (120 Civic Center Dr. West, Santa Ana) or the Tustin Area Museum (395 El Camino Real, Tustin), at which time you will be given a booklet describing each home and garden as well as a convenient map to help you drive from place to place.

Tickets are \$5 donation per person. They are available at both locations on the day of the tour or can be purchased in advance using the form below. Advance mail deadline is March 20.

For additional information, please call the Tustin Area Museum at 731-5701 or Gregg at 838-9642.

For advance tickets, please send checks made out to the Santa Ana Historical Preservation Society (S.A.H.P.S. is fine) to S.A.H.P.S.; P.O. Box 2422; Santa Ana, CA 92707. Advance tickets can be picked up at either starting point.

Name: _____ Phone #: _____

Mailing Address: _____

City: _____ Zip: _____

Number of tickets ordered: _____ Amount Enclosed: _____

Membership Application

The Santa Ana Historical Preservation Society

We invite you to join (or renew your membership to) the Santa Ana Historical Preservation Society. We welcome everyone with an interest in history or saving Orange County heritage -- regardless of where you live. Our members are our most important asset.

New Member ☐

Renewal ☐

Individual ☐ \$10

Organization/Business ☐ \$20

Patron ☐ \$100

Family ☐ \$15

Supporting Member ☐ \$50

Name _____ Telephone # _____

Organization/Company Name (if applicable) _____

Address _____

City _____ State _____ Zip _____

Send this form and your check to:

SAHPS, 120 Civic Center Dr. West, Santa Ana, CA 92701.

Santa Ana
Historical Preservation Society
120 Civic Center Dr. West
Santa Ana, CA 92707

First Class Mail

