

# Santa Ana Historical Preservation Society Newsletter

Founded 1974

Spring 1998



## Board of Directors 1998

### President

Alison Young

### Vice-President

Tim Rush

### Secretary

Dominic Walsh

### Treasurer

Guy Ball

### Directors

Ed Cote

Carol Lescher

Jim Marquez

Joanne Ramirez

Anthony Reichardt

John Sorenson

Beverly Thompson

### Curator of Collections

Diann Marsh

### Medical Historian

Dr. Lawrence Serber

## SAHPS Will Partner West Coast Theatre Project

The SAHPS Board recently voted to join the West Coast Theatre Project in its effort to purchase and restore the historic West Coast Theatre, located near the intersection of 3rd and Main Streets in downtown Santa Ana. Built in 1922, this last of Santa Ana's venerable theaters has suffered systematic destruction, as the passage of time, changing ownership, fluctuating fortunes, and the changing tide of theater-going habits, have all contributed to its deterioration.

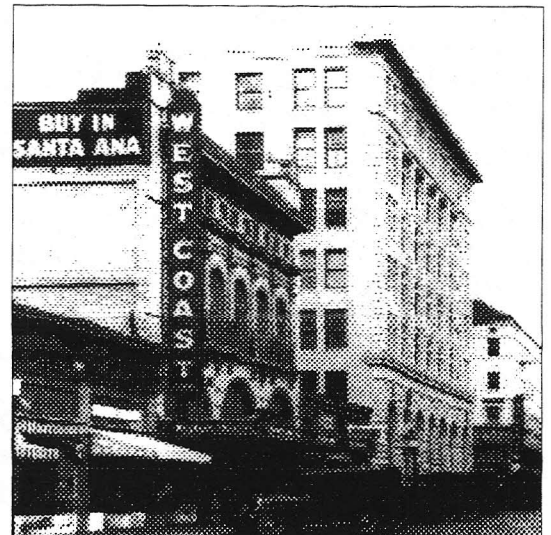
The building is currently home to the First Apostolic Church, which has been restoring it as a place of worship. But with a growing congregation, the church is interested in relocating.

The West Coast Theatre Restoration Project was founded in 1997 with the intent of restoring the theater as a showcase for live dramatic, musical, and dance performances, and as a movie house for classic, independent, and foreign films. The idea of bringing the theater back to its original quiet glory has caught the enthusiasm of Santa Ana educators, business people, preservationists, and lovers of good architecture, according to Julie Campus, who heads the restoration project.

The group is currently preparing a video presentation, to be aired on Santa Ana's community cable television station.

*Continued, page 4*

The West Coast Theatre, then... In its 1920s heyday, the movie theater occupied an important place on Santa Ana's Main Street. Inside, it boasted a fine pipe organ. For a look at the building today, see page 4.



## President's Message

Nineteen ninety-seven was a challenging and exciting year for the Society. As you know, the Orange County bankruptcy a few years back resulted in a mortgage to pay for the property under the Dr. Howe-Waffle house. Ours is an all-volunteer group, so fund-raising to keep up with the payments has been a challenge, to say the least. I am happy to say that the financial support of our members and friends—through membership dues, donations to our Mortgage For A Day program, sales of books and afghans and proceeds from our tours—allowed us to keep up with the payments last year.

Our Curator of Collections, Diann Marsh, has applied for Block Grant funding to create a new Santa Ana Walking Tour booklet.

We entered the Computer Age with our own Web site in 1996, and in 1997 we had more than 1000 people showing interest in our site, generating a number of inquiries via e-mail.

Working with block grant funds through the City of Santa Ana and a terrific group of volunteers who sanded, painted, and planted, some much-needed repairs and renovations were completed on the Dr. Howe-Waffle House. Santa Ana's community spirit was very much in evidence as SAHPS Board members, City Council people, members of the Orange County Historical Society, representatives of Taller San Jose, and Santa Ana Firefighters joined the effort to preserve this beautiful Victorian building. Why not drive by one evening to view the results of our labors and to admire how the fine architecture is now accented by new outdoor floodlights.

Our Dickens of a Christmas Holiday Tour had an attendance rate of over 80%, despite being held during one of the worst rainstorms of the season. For so many people to brave El Niño to attend (and work at) this event indicates a lively interest in local history and architecture here in Orange County.

For 1998, our Board members look forward to furthering our objective of supporting historic preservation and sharing the rich history of Santa Ana with the community. Among the exciting projects in store for SAHPS:

- Sponsor a grassroots effort to preserve the historic West Coast Theatre;
- Partner a new book project with OCHS;
- Open the House for regularly scheduled tours;
- Increase our support base with a concerted membership drive;

- Continue repairs and improvements to the House and Carriage Barn;

- Make the House available to the public for events and receptions.

On the front page of this newsletter you'll see some new names listed as Board members, as well as new titles for some of the old names. Welcome, all!—*Alison Young*

## We're Minding your Manners!

Good manners go hand-in-hand with good leadership and can help build self-esteem, we are told. With this in mind, the SAHPS has formed a relationship with The Addington Academy of Protocol and Etiquette to offer classes in etiquette for children and young adults. The classes will be conducted at the Dr. Howe-Waffle House.

Thursday evenings will be given over to instruction in dining skills for young people ages 8–12 and 13–21. Wednesday evenings and Saturday mornings will feature classes in modern manners for the same two age groups. Addington Academy is certified by the Protocol School of Washington. For enrollment and pricing information call (714) 840-9699.

### Your Event

*Wedding & Reception • Family Celebration  
Meeting • Musicales • Barbeque*

Could be held at the beautiful  
Dr. Howe-Waffle House,  
Santa Ana's finest Victorian Home.

Accommodations for indoor and outdoor functions.  
Kitchen facilities available.  
Call Carol Leshner for details—(714) 541-3927

The *Santa Ana Historical Preservation Society Newsletter* is produced by the Society for its members and other friends. A membership application and renewal form may be found on the back page. We invite you to join us in the preservation and appreciation of Santa Ana history.

All material in this issue is copyrighted 1998 by SAHPS.

*Newsletter Editor:* Beverly Thompson  
*Contributors:* Alison Young, Julie Campus,

Santa Ana Historical Preservation Society  
120 Civic Center Drive West  
Santa Ana, California 92701

Visit our Web site: <http://www.geocities.com/heartland/6452>

*santana-h-p-soc  
d fvet  
6542*

## Spring is Here, and the Docent Search is On!

If it's spring, then it must be time for the SAHPS annual Home and Garden Tour. Of course, it also means that we're starting our annual search for volunteers to serve as docents for the tour.

Tour 1998 will be held on Saturday, May 30th and Sunday, May 31st, and will feature, as usual, some of Santa Ana's outstanding homes and gardens. We'll be working hard to top last year's attendance of more than 600. Can you help? We need docents for three-hour shifts—early or late—for both days.

Volunteering to docent is not without benefits. Just to mention a few incentives:

- Free admission to the tour, for either day.
- Up-close-and-personal introductions to the history, architecture, and horticulture of some of Orange County's most beautiful homes and gardens.
- Working with a great group of people.

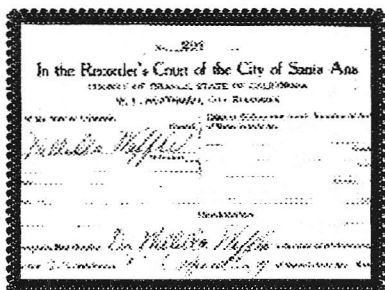
Interested? Please say yes, by calling Alison Young at (714) 569-9225. If you leave your name and telephone number on her answering machine she will get in touch in late April, to confirm your availability and shift preference.

If you've helped out before at the Spring Home and Garden Tour, then we look forward to seeing you again. If you're new to the docent game (and it is fun), then we look forward to meeting you!

### Speedy Delivery

"But, officer, I'm on my way to deliver a baby!"

We can only surmise that it was an emergency maternity case that caused Dr. Willela Howe-Waffle to run afoul of the law in 1924. Charged with violating *Section 22 Sub-Section a: speeding*, the good doctor appeared in court to answer the misdemeanor charge on September 24.



"Not guilty," was the plea, and "Not guilty," was the verdict, according to a document of the Recorder's Court, City of Santa Ana. "Defendant was discharged by the Court," it reads.



Over Valentine's weekend the Dr. Howe-Waffle House was the setting for romance, as the SAHPS hosted an exhibition of valentines dating from the 1840s to the 1930s. The collection of antique German mechanicals, elaborate cutwork pieces, and complex honeycomb valentines belongs to Evalene Pulati, president of the National Valentine Collectors Association, now in its twentieth year.

For a \$5 donation the public was treated to refreshments, a tour of the House, and, on February 15, a concert of harp music. Concurrently on display were more than 20 antique wedding gowns and wedding memorabilia.



## Dr. Howe-Waffle Featured Among "Inspiring Women"

An exhibit at Cal State Fullerton's Atrium Gallery honoring inspiring women includes a tribute to Dr. Willela Howe-Waffle. Medical instruments such as some that Dr. Howe-Waffle, Orange County's first woman physician, might have used are on display, as are pictures, diplomas, and other memorabilia.

The display is part of a larger exhibit, "Hat Pins of Feminism—The Art of Elegance," which will run through May 31.

### THINK SPRING!

**SAHPS Home & Garden Tour!—Sat., May 30 & Sun., May 31**

#### Other upcoming tours:

**Floral Park Home & Garden Tour—April 25 & 26 • 543-3218**

**Tustin Area Hist. Soc. Old Town Tustin Promenade—May 2 • 731-5701**

## Mortgage for a Day

This program is designed to help us pay off the mortgage on the Dr. Howe-Waffle House. The way it works is that friends and members of the SAHPS contribute to the mortgage payment for a day, week, or even a month. Payments may be as a one-time contribution or as an annual donation. Frequently, contributions are made in memory of others.

Mortgage for a Day amounts to a \$30 contribution. Mortgage for a Week amounts to \$210. The Mortgage for a Month contribution is \$900.

Just send your check to the Santa Ana Historical Preservation Society, 120 Civic Center Drive West, Santa Ana, CA 92701. Include the name of the person in whose memory or in whose honor your contribution is being made.



## Would You Be a Friend?

As everyone knows, Mrs. Adeline Walker was a good friend to Santa Ana. It was through her dedication, and that of a group of fellow volunteers, that the Dr. Howe-Waffle House, headquarters of the SAHPS, was preserved, moved, and restored.

That was more than 20 years ago. Today, the spirit of Mrs. Walker lives on through another group of dedicated volunteers, "The Friends of Mrs. Walker." This is the group of community-minded people who are interested in helping out with SAHPS projects throughout the year, yet who can't commit to attending a regular monthly Board meeting.

Would you like to be a Friend of Mrs. Walker? Is there a special skill or area of expertise where you might lend a hand? Depending on how much time and energy you have to commit to SAHPS, during the upcoming year you might chair or participate on committee; help catalog collections at the House; contact local business for support, donations, or advertising; and pitch in on some of the many tasks that go toward making a successful event: decorating, locating speakers and collections, cooking, docenting, distributing flyers.

Perhaps you'd prefer to work on a sub-committee: Fund Raising, Grant Writing, Collections, Property Improvements, or Event Planning.

Please say you'd like to be a Friend of Mrs. Walker by dropping a note to: SAHPS, Friends of Mrs. Walker, 120 Civic Center Drive West, Santa Ana, CA 92701. Or call Alison Young at (714) 569-9225.

## Another Historic Santa Ana Building is in Peril!

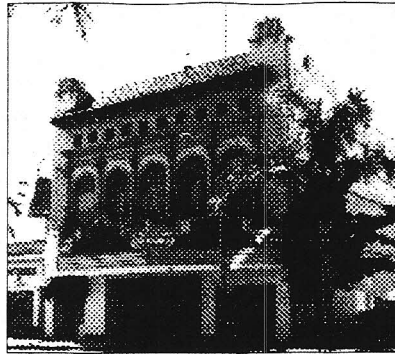
Pending its sale, according to a Notice of Intent filed on January 12, 1998, the two-story 1929 stucco and wood-frame building at 1818-1828 North Main Street in Santa Ana will be demolished. Zoning for the area is Museum District.

Should the demolition proposal go through, the site will be cleared for new construction, a building for the Saint Joseph Ballet. The ballet is now housed in the 200 block of East Fourth Street in Santa Ana.

If you would like to make yourself heard on the subject of this demolition, hurry—the deadline is May 18, 1998 Call Vince Fregoso, associate planner for the City of Santa Ana, (714) 667-2713.

West Coast Theatre project, from page 1:

The project needs more support. If you have expertise to offer—in fund-raising, for instance, or promotion—or if you're simply interested in learning more, contact Julie Campus at: West Coast



Sadly, since this picture was taken in 1997 the marquee (not an original feature) has been dismantled. The projected restoration would include work on the cafe next door.

Theatre Restoration Project, 2729 North Bristol, Suite B5-303, Santa Ana, CA 92706; telephone (714) 957-1425; e-mail: westcoasttheatre@usa.net.

## Tim Graber Honored for Fire Engine Restoration

In recognition of Tim Graber's efforts with other volunteers in restoring the Santa Ana Fire Department's 1921 Seagrave fire engine, the SAHPS honored him with its Preservation Award. City Councilman Rob Richardson presented the award at the annual SAHPS Member Dinner on February 5.

The beautifully restored red fire engine, the first motorized pumper used in Santa Ana, is on display at Fire Station #5, 1220 West Walnut Street.

## Thank You!

- Mr. & Mrs. Rufino Martinez, *mortgage for a day*
- The Vining Family, *mortgage for a day, Nov. 1, an annual donation; also, the donation of vintage magazines.*
- Kay Housely, *mortgage for a day*
- Sherlee Mellas, *mortgage for a week, an annual donation*
- Robert P. Rusby, *mortgage for a day, Oct. 17, in honor of the late Dennis Hill*
- Santa Ana Garden Club, *cash donation*
- Anonymous, *mortgage for a month*
- Jim Sleeper, *cash donation*
- Vito and Evalene Pulati, *cash donation*

Sp 98

## Santa Ana Historical Preservation Society Membership Application and Order Form

*We invite you to join or renew your membership with the Santa Ana Historical Preservation Society. We welcome everyone with an interest in history or in saving Santa Ana and Orange County heritage, regardless of where you live.*

*Dues (can vary depending on your generosity):*

- ☐ Individual (\$10-\$30)    ☐ Family (\$15-\$49)    ☐ Organization/Business (\$20-\$49)  
☐ Supporter (\$50-\$99)    ☐ Patron (\$100 or more)

*Make the Mortgage for a Day:*

*Yes! I would like to help the Santa Ana Historical Preservation Society pay the mortgage on the Dr. Howe-Waffle House as follows:*

- Date(s): \_\_\_\_\_ ☐ Mortgage for a Day (\$30)  
☐ Mortgage for a Week (\$210) ☐ Mortgage for a Month (\$900)  
☐ Check here if you wish your donation to be anonymous.  
☐ One-time donation    ☐ Annual Donation on This Date—Please send a reminder.

*Santa Ana: An Illustrated History*—This book covers Santa Ana history from the mid-1800s to modern times. Includes many never-before-published photographs, some from private collections. \$29.95 (hard bound) or \$19.95 (soft bound), plus \$3.00 shipping and handling.

Quantity ordered: \_\_\_\_\_

*Santa Ana Historical Society Commemorative Afghan*—Features the Dr. Howe-Waffle House and other historic Santa Ana houses. Available in Williamsburg blue, navy, hunter green or cranberry, contrasted with natural. \$39.95 (current members) or \$44.95 (non-members), plus \$5.00 for Priority mailing. Quantity ordered: \_\_\_\_\_

Merchandise Total: \_\_\_\_\_

Shipping and Handling Total: \_\_\_\_\_

Membership Dues: \_\_\_\_\_

Donation: \_\_\_\_\_

Grand Total: \_\_\_\_\_

*(Remember, membership and donations to the Santa Ana Historical Preservation Society are tax deductible!)*

Name: \_\_\_\_\_ Telephone: \_\_\_\_\_

Address: \_\_\_\_\_

City: \_\_\_\_\_ State: \_\_\_\_\_ Zip: \_\_\_\_\_

Send this form and your check to:  
SAHPS, 120 Civic Center Drive West, Santa Ana, CA 92701

Sp 98



Santa Ana  
Historical Preservation Society  
120 Civic Center Drive West  
Santa Ana, California 92701

Non Profit Org.  
U.S. Postage  
Paid  
Santa Ana, CA  
Permit No  
1615

**Dated Material Enclosed**

~~ENCLOSURE~~  
~~ENCLOSURE~~  
~~ENCLOSURE~~